

Most ev. č. 232-007 Liblín

Správa a údržba silnic Plzeňského kraje, p.o., Koterovská 162, 326 00 Plzeň, tel.: 377 172 403, E-mail: posta@suspk.eu

Investor:



Správa a údržba silnic Plzeňského kraje, p.o.
Koterovská 162
326 00 Plzeň


revize a

Výškový systém:

Bpv

Souřadnicový systém:

S-JTSK

Číslo zakázky:	16 116 03	HIP:	Ing. Daniel ŠINDLER, Ph.D.	 Bezová 1658/1, 147 00 Praha 4-Braník +420 244 462 219 pontex@pontex.cz
Schválil:	Ing. Petr SOUČEK	724007830, dsn@pontex.cz		
		Zodp. projektant:	Ing. Petr ŘEZKA	
		727883828, pre@pontex.cz		
Tech. kontrola:	Ing. Ondřej DĚDEK	Vypracoval:		
728355965, ode@pontex.cz				

Objednatel:	SÚSPK p.o.	Obec:	Liblín	Kraj:	Plzeňský
Akce:	Most ev. č. 232-007 Liblín			Datum	Stupeň
Část:	E DOKLADOVÁ DOKUMENTACE			10/2022	DUSP
Objekt:				Souprava	Č. přílohy
Příloha:	GEODETICKÉ ZAMĚŘENÍ STAVBY				E.3



VISIONPLAN-3D s.r.o.

Sokolovská 784/41
323 00, Plzeň
IČO: 09565884
DIČ: CZ09565884

tel.: +420 737 770 270
e-mail: faiferlik@visionplan.cz
www.VISIONPLAN.cz

A.TECHNICKÁ ZPRÁVA

Paré:



1. Informace o měření:

Lokalitu tvoří: blízké okolí Liblínského mostu

Katastrální území: Liblín [682993], Kozojedy u Kralovic [671932]

Datum plnění: 2/2022

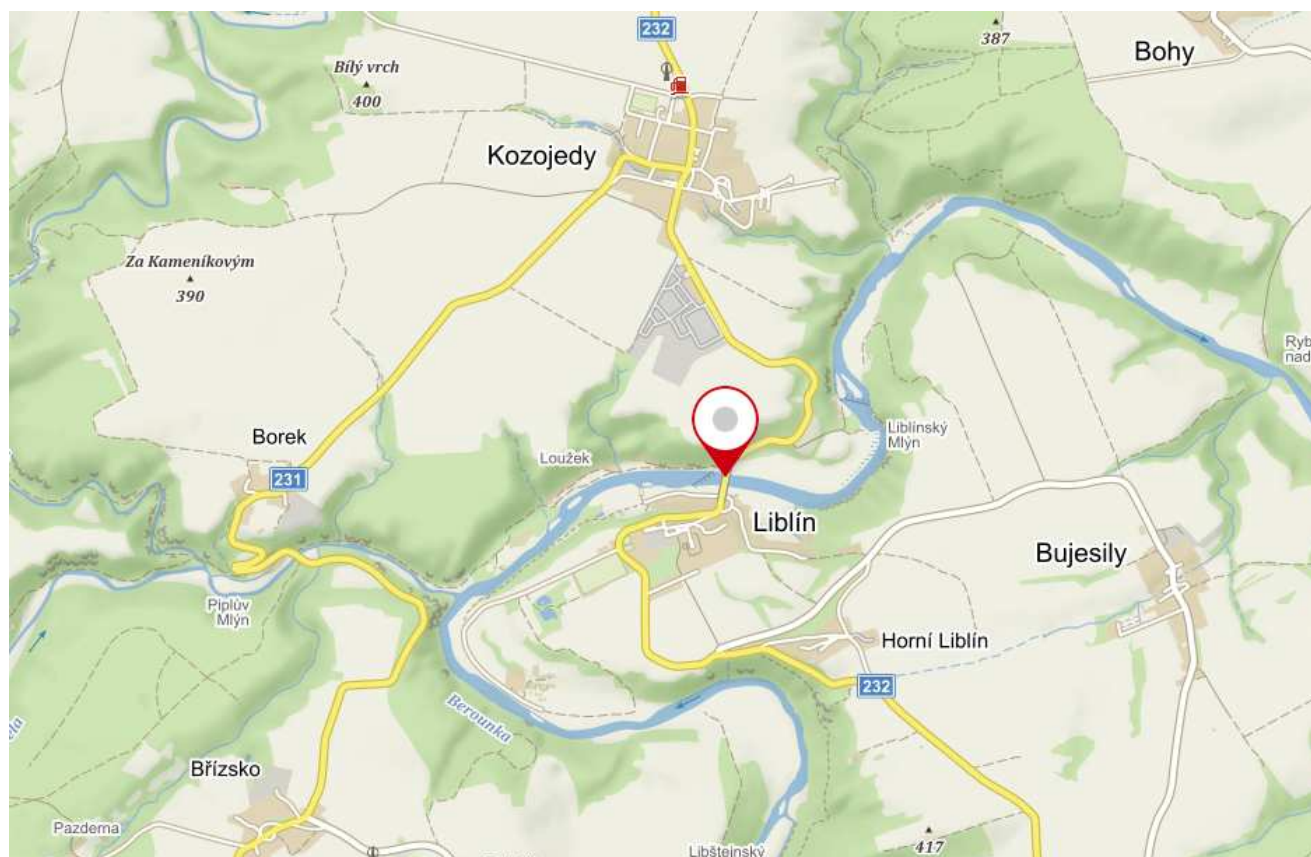
Použité přístroje a software: Totální stanice SOKKIA IX – 502, GNSS přijímač SOKKIA GRX3, Autocad, Geus, Sokkia GNSS, Atlas DMT

Souřadnicový systém: S-JTSK

Výškový systém: Bpv

Zaměřil a zpracoval: Ing. Patrik Fojt, Ondřej Šmolík

Kontroloval: Ing. Jaroslav Faiferlík



Zhotovitel:

VISIONPLAN-3D s.r.o.
Sokolovská 784/41
323 00, Plzeň
IČO: 09565884
DIČ: CZ09565884

Objednatel:

PONTEX, spol. s.r.o.
Bezová 1658/1
147 00, Praha Braník
IČO: 40763439
DIČ: CZ40763439

Kontakt:

Ing. Jaroslav Faiferlík
Tel.: +420 737 770 270
faiferlik@visionplan.cz
www.VISIONPLAN.cz





2. Podrobná specifikace použitých přístrojů

GNSS přijímač SOKKIA GRX3

Technické parametry udávány výrobcem:

Real Time Kinematika (RTK) Horizontální: 5 mm + 0.5 ppm

Vertikální: 10 mm + 0.8 ppm

Totální stanice SOKKIA IX - 502

Technické parametry udávány výrobcem:

Úhlová přesnost: 2" 0.0006 gon/0.010 mil

Délková přesnost:

bez-hranolové (přesné): (2.0 + 2 ppm x D) mm

bez-hranolové (rychlé): (5 + 2 ppm x D) mm

s odrazným štítkem: (2 + 2 ppm x D) mm (přesné), (5 + 2 ppm x D) mm (rychlé)

s hranolem ATP1/ATP1S: (2.0 + 2 ppm x D) mm (přesné), (5 + 2 ppm x D) mm (rychlé)

3. Postup měřičských prací a zpracování

Zaměření bylo provedeno totální stanicí SOKKIA IX – 502 a GNSS přijímačem SOKKIA GRX3. Připojení do souřadnicového systému JTSK a výškového systému Bpv, bylo provedeno pomocí GNSS přijímače SOKKIA GRX3. Polohopisný a výškopisný plán byl zpracován v SW GEUS a AutoCAD. Zaměření obsahuje průběh terénu, cest, inženýrských sítí, stromů a dalších prvků polohopisu a výškopisu. Jedná se o doměření blízkého okolí mostu. Most samotný v této zakázce řešen nebyl, bylo pouze provedeno navázání měření a kresby na již stávající zaměření mostní konstrukce.

Součástí výkresové části je katastrální mapa k.ú. Liblín [682993], Kozojedy u Kralovic [671932] platná k datu 2/2022.

4. Přílohy měřičského elaborátu

Přílohy technické zprávy (pouze v elektronické podobě):

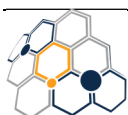
- Protokol – GNSS
- Protokol – Polární metoda

Přílohy měřičského elaborátu:

- A. Technická zpráva (*.DOC)
- B.1. Seznam souřadnic (*.DOC)
- B.2. Seznam souřadnic (*.TXT)
- C. Fotodokumentace
- D.1. Polohopis a výškopis 2D (*.DWG)
- D.2. 3D Drátěný model
- D.3. Katastrální mapa (*.DWG)
- D.4. 3D TIN
- E.DMT

V Plzni dne 24.2.2022

Ing. Jaroslav Faiferlík



PROTOKOL GNSS

GNSS Sensor: GRX3 s.no.: 1468-10020
Software pro transformaci mezi ETRS89 a S-JTSK pomocí zpřesněné globální transformace: SOKKIA GNSS 1.0
Půlní software: GeoPro Field Jul 12, 2021 (GeoPro Field V4.1.0.0)
Projekce: Czechia-Krovak 2018 table_yx_3_v1710.dat
Model geoidů: CR-2005_v1005.dat

Pro výpočet S-JTSK souřadnic a Bpv výšek byla použita zpřesněná globální transformace mezi ETRS89 a S-JTSK, realizace od 1.1.2018.

Měření

Bod č.	Y	X	H(orto)	Výška výtčky	Datum Čas (H:M:S)	Počet epochRTK řešení	GDOP	PDOP	Počet satelitů GPS	GLONASS	GALILEO	BEIDOU	Mountpoint
10	807672.650	1052783.077		284.010	1.650	2022-02-21 09:07:16	1	FIX	3.642	2.952	0	RTK3-MSM	
11	807672.638	1052783.127		283.784	1.650	2022-02-21 09:07:27	1	FIX	2.660	2.176	0	RTK3-MSM	
69	807651.453	1052794.211		283.076	1.650	2022-02-21 09:21:49	1	FIX	2.342	1.942	0	RTK3-MSM	
70	807645.227	1052794.592		282.812	1.650	2022-02-21 09:22:07	1	FIX	2.008	1.717	0	RTK3-MSM	
76	807642.841	1052794.646		282.716	1.650	2022-02-21 09:23:24	1	FIX	2.006	1.713	0	RTK3-MSM	
77	807642.992	1052794.833		283.334	1.650	2022-02-21 09:23:44	1	FIX	1.721	1.477	0	RTK3-MSM	
78	807645.377	1052794.668		283.651	1.650	2022-02-21 09:23:56	1	FIX	1.610	1.375	0	RTK3-MSM	
81	807636.378	1052794.371		282.470	1.650	2022-02-21 09:25:20	1	FIX	2.375	1.990	0	RTK3-MSM	
82	807635.983	1052794.476		282.694	1.650	2022-02-21 09:25:33	1	FIX	2.179	1.851	0	RTK3-MSM	
116	807603.878	1052792.085		280.004	1.650	2022-02-21 09:35:12	1	FIX	3.549	2.911	0	RTK3-MSM	
117	807601.902	1052791.910		280.013	1.650	2022-02-21 09:35:21	1	FIX	2.677	2.284	0	RTK3-MSM	
120	807603.934	1052792.127		279.723	1.650	2022-02-21 09:36:25	1	FIX	3.621	2.969	0	RTK3-MSM	
137	807607.694	1052784.387		280.111	1.650	2022-02-21 09:40:49	1	FIX	1.851	1.559	0	RTK3-MSM	
175	807614.277	1052777.217		282.062	1.650	2022-02-21 09:49:45	1	FIX	1.547	1.333	0	RTK3-MSM	
178	807608.611	1052759.069		281.781	1.650	2022-02-21 09:50:58	1	FIX	1.446	1.264	0	RTK3-MSM	
184	807609.046	1052758.695		281.639	1.650	2022-02-21 09:53:20	1	FIX	1.446	1.264	0	RTK3-MSM	
208	807607.796	1052758.964		281.443	1.650	2022-02-21 09:58:15	1	FIX	1.387	1.222	0	RTK3-MSM	
209	807612.929	1052779.318		280.390	1.650	2022-02-21 09:58:55	1	FIX	1.821	1.563	0	RTK3-MSM	
218	807607.260	1052764.738		278.718	2.000	2022-02-21 10:02:09	1	FIX	3.246	2.599	0	RTK3-MSM	
219	807607.823	1052759.953		279.981	2.000	2022-02-21 10:02:24	1	FIX	1.928	1.674	0	RTK3-MSM	
220	807611.075	1052768.676		280.222	2.000	2022-02-21 10:02:47	1	FIX	1.494	1.305	0	RTK3-MSM	
222	807605.909	1052760.580		278.684	2.000	2022-02-21 10:03:49	1	FIX	2.204	1.870	0	RTK3-MSM	
223	807605.598	1052759.908		278.594	2.000	2022-02-21 10:03:57	1	FIX	2.207	1.873	0	RTK3-MSM	
224	807602.977	1052764.363		276.366	2.000	2022-02-21 10:04:33	1	FIX	2.358	1.979	0	RTK3-MSM	
225	807599.056	1052760.711		274.602	2.000	2022-02-21 10:04:58	1	FIX	3.297	2.693	0	RTK3-MSM	
226	807599.449	1052760.187		274.686	2.000	2022-02-21 10:05:14	1	FIX	3.304	2.699	0	RTK3-MSM	
227	807604.186	1052755.333		278.599	2.000	2022-02-21 10:05:52	1	FIX	1.950	1.715	0	RTK3-MSM	
228	807603.541	1052755.652		278.544	2.000	2022-02-21 10:06:00	1	FIX	1.807	1.566	0	RTK3-MSM	
229	807599.441	1052753.812		276.090	2.000	2022-02-21 10:06:58	1	FIX	1.806	1.571	0	RTK3-MSM	
230	807597.642	1052750.136		275.985	2.000	2022-02-21 10:07:24	1	FIX	1.863	1.604	0	RTK3-MSM	
231	807594.926	1052745.907		274.563	2.000	2022-02-21 10:07:51	1	FIX	2.248	1.847	0	RTK3-MSM	
232	807594.208	1052745.301		274.438	2.000	2022-02-21 10:08:14	1	FIX	2.465	1.976	0	RTK3-MSM	
233	807593.418	1052746.235		274.183	3.650	2022-02-21 10:08:57	1	FIX	1.643	1.411	0	RTK3-MSM	
234	807599.462	1052742.846		278.513	1.650	2022-02-21 10:09:49	1	FIX	2.119	1.771	0	RTK3-MSM	
235	807598.859	1052743.134		278.487	1.650	2022-02-21 10:09:58	1	FIX	2.007	1.710	0	RTK3-MSM	
236	807597.133	1052738.137		278.568	1.650	2022-02-21 10:10:15	1	FIX	1.875	1.620	0	RTK3-MSM	
237	807597.601	1052737.893		278.594	1.650	2022-02-21 10:10:22	1	FIX	2.128	1.779	0	RTK3-MSM	
238	807597.018	1052735.961		279.035	1.650	2022-02-21 10:10:39	1	FIX	1.961	1.606	0	RTK3-MSM	
239	807596.823	1052735.222		279.197	1.650	2022-02-21 10:10:51	1	FIX	2.381	1.978	0	RTK3-MSM	
240	807598.558	1052734.472		280.445	1.650	2022-02-21 10:11:05	1	FIX	2.140	1.789	0	RTK3-MSM	
241	807596.480	1052730.211		280.176	1.650	2022-02-21 10:11:38	1	FIX	1.992	1.650	0	RTK3-MSM	
242	807596.757	1052728.916		280.064	1.650	2022-02-21 10:12:02	1	FIX	2.185	1.758	0	RTK3-MSM	

270	807611.199	1052764.239	281.579	1.650	2022-02-21 10:20:09	FIX	1.902	1.638	7	4	5	0	RTK3-MSM
395	807586.415	1052682.124	270.362	1.650	2022-02-21 11:42:23	FIX	1.340	1.161	7	7	6	0	RTK3-MSM
396	807587.556	1052682.464	270.779	1.650	2022-02-21 11:42:32	FIX	1.406	1.198	7	7	6	0	RTK3-MSM
397	807587.164	1052679.365	270.712	1.650	2022-02-21 11:42:46	FIX	1.436	1.228	7	6	5	0	RTK3-MSM
398	807586.363	1052679.048	270.014	1.650	2022-02-21 11:42:56	FIX	1.350	1.173	7	7	5	0	RTK3-MSM
399	807592.143	1052674.839	270.076	1.650	2022-02-21 11:43:28	FIX	1.569	1.308	6	5	7	0	RTK3-MSM
400	807593.034	1052675.333	270.700	1.650	2022-02-21 11:43:39	FIX	1.569	1.308	5	5	7	0	RTK3-MSM
401	807593.262	1052677.570	270.713	1.650	2022-02-21 11:43:48	FIX	1.569	1.308	5	5	7	0	RTK3-MSM
402	807591.222	1052679.364	270.850	1.650	2022-02-21 11:43:53	FIX	1.597	1.337	5	5	5	0	RTK3-MSM
403	807589.848	1052677.795	270.743	1.650	2022-02-21 11:44:00	FIX	1.597	1.338	6	6	5	0	RTK3-MSM
442	807529.154	1052581.432	275.979	1.650	2022-02-21 12:00:59	FIX	2.298	1.889	4	6	4	0	RTK3-MSM
443	807527.817	1052580.649	275.689	1.650	2022-02-21 12:01:03	FIX	2.833	2.321	5	6	3	0	RTK3-MSM
444	807522.951	1052576.197	276.534	1.650	2022-02-21 12:01:20	FIX	2.829	2.318	6	6	6	0	RTK3-MSM
445	807516.975	1052575.290	276.469	1.650	2022-02-21 12:01:33	FIX	1.959	1.636	6	6	5	0	RTK3-MSM
446	807505.149	1052572.532	277.397	1.650	2022-02-21 12:02:25	FIX	2.008	1.645	5	6	6	0	RTK3-MSM
447	807501.478	1052566.005	279.365	1.650	2022-02-21 12:03:03	FIX	2.016	1.706	6	5	5	0	RTK3-MSM
448	807499.819	1052560.820	280.708	1.650	2022-02-21 12:03:14	FIX	3.513	2.845	4	4	3	0	RTK3-MSM
449	807498.029	1052556.219	281.847	1.650	2022-02-21 12:03:34	FIX	7.743	6.288	4	2	3	0	RTK3-MSM
450	807496.244	1052555.584	281.797	1.650	2022-02-21 12:04:49	FIX	7.611	6.149	4	0	4	0	RTK3-MSM
451	807492.894	1052557.781	281.606	1.650	2022-02-21 12:05:14	FIX	1.935	1.606	5	7	6	0	RTK3-MSM
452	807492.548	1052557.408	282.143	1.650	2022-02-21 12:05:29	FIX	2.129	1.767	4	7	4	0	RTK3-MSM
453	807500.519	1052560.787	281.521	1.650	2022-02-21 12:05:48	FIX	1.830	1.570	5	7	4	0	RTK3-MSM
454	807495.740	1052554.729	285.557	1.650	2022-02-21 12:06:52	FIX	1.788	1.524	6	7	5	0	RTK3-MSM
455	807498.656	1052555.867	285.349	1.650	2022-02-21 12:07:00	FIX	1.947	1.700	6	7	6	0	RTK3-MSM
463	807565.997	1052596.172	275.067	1.650	2022-02-21 13:45:06	FIX	5.202	4.105	5	4	6	0	RTK3-MSM
464	807566.733	1052598.443	274.682	1.650	2022-02-21 13:45:18	FIX	3.662	2.947	5	4	4	0	RTK3-MSM
500	807573.510	1052608.079	273.368	1.650	2022-02-21 13:56:07	FIX	2.130	1.745	5	3	6	0	RTK3-MSM
547	807611.842	1052664.143	269.707	1.650	2022-02-21 14:31:11	FIX	1.615	1.400	9	5	5	0	RTK3-MSM
597	807628.266	1052759.920	274.964	1.650	2022-02-21 14:31:50	FIX	1.918	1.660	7	6	6	0	RTK3-MSM
599	807628.197	1052759.764	274.951	1.650	2022-02-21 14:32:09	FIX	2.320	2.002	6	5	5	0	RTK3-MSM
605	807628.350	1052758.882	274.812	1.650	2022-02-21 14:33:56	FIX	2.289	1.881	7	5	6	0	RTK3-MSM
606	807624.271	1052747.858	274.455	1.650	2022-02-21 14:34:22	FIX	1.924	1.610	7	5	7	0	RTK3-MSM
635	807615.243	1052744.751	278.350	1.650	2022-02-21 14:41:09	FIX	1.983	1.652	8	6	7	0	RTK3-MSM
715	807547.998	1052589.815	282.302	1.650	2022-02-21 15:27:02	FIX	1.913	1.614	7	4	6	0	RTK3-MSM
742	807520.171	1052563.513	284.167	1.650	2022-02-21 15:31:35	FIX	1.967	1.649	6	6	6	0	RTK3-MSM
805	807572.958	1052579.723	281.008	1.650	2022-02-21 15:52:06	FIX	2.021	1.669	6	5	4	0	RTK3-MSM
808	807559.837	1052574.315	282.264	1.650	2022-02-21 15:53:11	FIX	1.499	1.303	7	5	6	0	RTK3-MSM
809	807575.159	1052573.345	281.310	1.650	2022-02-21 15:53:34	FIX	1.653	1.399	7	5	6	0	RTK3-MSM
811	807574.230	1052568.374	281.347	1.650	2022-02-21 15:55:53	FIX	3.404	2.794	6	4	2	0	RTK3-MSM
868	807500.729	1052547.653	285.506	1.650	2022-02-21 16:11:08	FIX	1.804	1.522	7	5	5	0	RTK3-MSM
869	807501.225	1052547.819	285.481	1.650	2022-02-21 16:11:28	FIX	1.777	1.478	7	5	6	0	RTK3-MSM
877	807497.145	1052546.114	285.739	1.650	2022-02-21 16:14:30	FIX	2.703	2.210	6	4	5	0	RTK3-MSM
880	807499.392	1052547.088	284.506	2.000	2022-02-21 16:14:30	FIX	1.973	1.641	5	4	4	0	RTK3-MSM
890	807496.727	1052546.748	286.003	1.650	2022-02-21 16:16:37	FIX	1.967	1.629	5	5	5	0	RTK3-MSM
891	807496.803	1052546.734	286.298	1.650	2022-02-21 16:16:47	FIX	1.933	1.609	7	5	5	0	RTK3-MSM
900	807588.922	1052671.792	269.240	1.650	2022-02-23 14:26:58	FIX	2.773	2.428	6	4	4	0	RTK3-MSM
901	807548.876	1052684.650	270.209	1.650	2022-02-23 14:29:09	FIX	1.816	1.563	9	5	6	0	RTK3-MSM
902	807548.526	1052682.746	269.974	1.650	2022-02-23 14:29:36	FIX	1.653	1.437	9	5	6	0	RTK3-MSM
903	807548.462	1052672.373	269.706	1.650	2022-02-23 14:31:45	FIX	1.536	1.327	9	5	6	0	RTK3-MSM
904	807548.382	1052671.340	269.676	1.650	2022-02-23 14:32:07	FIX	1.617	1.376	9	6	6	0	RTK3-MSM
905	807572.033	1052682.326	270.110	1.650	2022-02-23 14:34:09	FIX	1.901	1.602	8	4	5	0	RTK3-MSM
906	807571.930	1052677.288	269.507	1.650	2022-02-23 14:35:24	FIX	1.579	1.357	7	5	4	0	RTK3-MSM
907	807571.678	1052675.046	269.385	1.650	2022-02-23 14:35:54	FIX	1.895	1.557	6	5	4	0	RTK3-MSM
908	807575.398	1052620.448	269.893	1.650	2022-02-23 14:45:22	FIX	1.714	1.476	7	5	2	0	RTK3-MSM
909	807576.588	1052620.104	269.885	1.650	2022-02-23 14:45:54	FIX	1.707	1.471	7	5	2	0	RTK3-MSM
910	807576.952	1052620.082	269.829	1.850	2022-02-23 14:49:05	FIX	1.959	1.693	8	4	2	0	RTK3-MSM
911	807577.610	1052622.324	269.828	1.850	2022-02-23 14:50:26	FIX	2.092	1.766	6	4	3	0	RTK3-MSM

912	807578.352	1052625.365	269.853	1.850	2022-02-23 14:53:10	1	FIX	2.767	2.342	6	4	3	0	RTK3-MSM
913	807578.437	1052625.612	269.590	1.650	2022-02-23 14:53:20	1	FIX	2.064	1.742	5	5	3	0	RTK3-MSM
914	807578.365	1052629.412	269.752	1.650	2022-02-23 14:54:02	1	FIX	2.562	2.096	5	3	5	0	RTK3-MSM
915	807579.617	1052632.965	269.734	1.650	2022-02-23 14:54:23	1	FIX	2.573	2.113	5	3	4	0	RTK3-MSM
916	807581.236	1052639.741	269.823	1.650	2022-02-23 14:55:00	1	FIX	8.280	6.374	5	2	3	0	RTK3-MSM
917	807583.567	1052645.547	269.456	1.650	2022-02-23 14:55:51	1	FIX	5.391	4.193	5	3	3	0	RTK3-MSM
918	807597.205	1052634.025	269.940	1.650	2022-02-23 14:56:50	1	FIX	1.955	1.654	7	4	5	0	RTK3-MSM
919	807601.029	1052641.332	269.548	1.650	2022-02-23 14:57:49	1	FIX	1.783	1.511	7	4	6	0	RTK3-MSM
920	807560.892	1052639.357	269.348	1.650	2022-02-23 15:00:21	1	FIX	2.110	1.801	7	2	5	0	RTK3-MSM
921	807537.306	1052636.656	269.713	1.650	2022-02-23 15:04:29	1	FIX	2.054	1.718	6	4	5	0	RTK3-MSM
922	807537.799	1052638.037	269.550	1.650	2022-02-23 15:05:08	1	FIX	2.044	1.711	6	4	5	0	RTK3-MSM
4001	807652.742	1052792.964	283.082	1.650	2022-02-21 08:37:46	30	FIX	1.984	1.679	7	4	4	0	RTK3-MSM
4001	807652.733	1052792.956	283.153	1.650	2022-02-21 16:28:47	30	FIX	1.703	1.476	8	4	5	0	RTK3-MSM
4002	807599.011	1052734.533	282.297	1.650	2022-02-21 08:40:59	30	FIX	1.710	1.440	7	5	4	0	RTK3-MSM
4002	807598.988	1052734.514	282.411	1.650	2022-02-21 10:51:15	30	FIX	1.697	1.468	9	6	5	0	RTK3-MSM
4003	807558.147	1052599.029	282.529	1.650	2022-02-21 08:55:51	30	FIX	1.909	1.639	7	4	4	0	RTK3-MSM
4003	807558.182	1052599.057	282.478	1.650	2022-02-21 12:12:10	30	FIX	1.682	1.452	6	7	7	0	RTK3-MSM
4004	807567.292	1052726.507	274.603	1.650	2022-02-21 10:56:40	30	FIX	1.778	1.554	9	6	4	0	RTK3-MSM
4004	807567.304	1052726.528	274.522	1.650	2022-02-21 13:33:03	30	FIX	1.774	1.528	7	8	8	0	RTK3-MSM
4005	807633.818	1052714.135	274.064	1.650	2022-02-21 10:59:10	30	FIX	1.804	1.575	9	6	5	0	RTK3-MSM
4005	807633.823	1052714.134	273.985	1.650	2022-02-21 16:35:03	30	FIX	1.666	1.436	8	5	5	0	RTK3-MSM

Souřadnice

Bod č. Y X dH(orto)

10	807672.650	1052783.077	284.010
11	807672.638	1052783.127	283.784
69	807651.453	1052794.211	283.076
70	807645.227	1052794.592	282.812
76	807642.841	1052794.646	282.716
77	807642.992	1052794.833	283.334
78	807645.377	1052794.668	283.651
81	807636.378	1052794.371	282.470
82	807635.983	1052794.476	282.694
116	807603.878	1052792.085	280.004
117	807601.902	1052791.910	280.013
120	807603.934	1052792.127	279.723
137	807607.694	1052784.387	280.111
175	807614.277	1052777.217	282.062
178	807608.611	1052759.069	281.781
184	807609.046	1052758.695	281.639
208	807607.796	1052758.964	281.443
209	807612.929	1052779.318	280.390
218	807607.260	1052764.738	278.718
219	807607.823	1052759.953	279.981
220	807611.075	1052768.676	280.222
222	807605.909	1052760.580	278.684
223	807605.598	1052759.908	278.594
224	807602.977	1052764.363	276.366
225	807599.056	1052760.711	274.602
226	807599.449	1052760.187	274.686
227	807604.186	1052755.333	278.599
228	807603.541	1052755.652	278.544
229	807599.441	1052753.812	276.090
230	807597.642	1052750.136	275.985
231	807594.926	1052745.907	274.563
232	807594.208	1052745.301	274.438

233	807593.418 1052746.235	274.183
234	807599.462 1052742.846	278.513
235	807598.859 1052743.134	278.487
236	807597.133 1052738.137	278.568
237	807597.601 1052737.893	278.594
238	807597.018 1052735.961	279.035
239	807596.823 1052735.222	279.197
240	807598.558 1052734.472	280.445
241	807596.480 1052730.211	280.176
242	807596.757 1052728.916	280.064
270	807611.199 1052764.239	281.579
395	807586.415 1052682.124	270.362
396	807587.556 1052682.464	270.779
397	807587.164 1052679.365	270.712
398	807586.363 1052679.048	270.014
399	807592.143 1052674.839	270.076
400	807593.034 1052675.333	270.700
401	807593.262 1052677.570	270.713
402	807591.222 1052679.364	270.850
403	807589.848 1052677.795	270.743
442	807529.154 1052581.432	275.979
443	807527.817 1052580.649	275.689
444	807522.951 1052576.197	276.534
445	807516.975 1052575.290	276.469
446	807505.149 1052572.532	277.397
447	807501.478 1052566.005	279.365
448	807499.819 1052560.820	280.708
449	807498.029 1052556.219	281.847
450	807496.244 1052555.584	281.797
451	807492.894 1052557.781	281.606
452	807492.548 1052557.408	282.143
453	807500.519 1052560.787	281.521
454	807495.740 1052554.729	285.557
455	807498.656 1052555.867	285.349
463	807565.997 1052596.172	275.067
464	807566.733 1052598.443	274.682
500	807573.510 1052608.079	273.368
547	807611.842 1052664.143	269.707
597	807628.266 1052759.920	274.964
599	807628.197 1052759.764	274.951
605	807628.350 1052758.882	274.812
606	807624.271 1052747.858	274.455
635	807615.243 1052744.751	278.350
715	807547.998 1052589.815	282.302
742	807520.171 1052563.513	284.167
805	807572.958 1052579.723	281.008
808	807559.837 1052574.315	282.264
809	807575.159 1052573.345	281.310
811	807574.230 1052568.374	281.347
868	807500.729 1052547.653	285.506
869	807501.225 1052547.819	285.481
877	807497.145 1052546.114	285.739
880	807499.392 1052547.088	284.506
890	807496.727 1052546.748	286.003
891	807496.803 1052546.734	286.298
900	807588.922 1052671.792	269.240
901	807548.876 1052684.650	270.209

902	807548.526	1052682.746	269.974
903	807548.462	1052672.373	269.706
904	807548.382	1052671.340	269.676
905	807572.033	1052682.326	270.110
906	807571.930	1052677.288	269.507
907	807571.678	1052675.046	269.385
908	807575.398	1052620.448	269.893
909	807576.588	1052620.104	269.885
910	807576.952	1052620.082	269.829
911	807577.610	1052622.324	269.828
912	807578.352	1052625.365	269.853
913	807578.437	1052625.612	269.590
914	807578.365	1052629.412	269.752
915	807579.617	1052632.965	269.734
916	807581.236	1052639.741	269.823
917	807583.567	1052645.547	269.456
918	807597.205	1052634.025	269.940
919	807601.029	1052641.332	269.548
920	807560.892	1052639.357	269.348
921	807537.306	1052636.656	269.713
922	807537.799	1052638.037	269.550
4001	807652.738	1052792.960	283.118
4002	807598.999	1052734.524	282.354
4003	807558.164	1052599.043	282.503
4004	807567.298	1052726.518	274.562
4005	807633.821	1052714.135	274.024

Porovnání měření

Bod č.	dY	dX	dH(orto)	delta čas (H:M:S)
4001	0.005	0.004	0.035	7:51:01
4002	0.011	0.009	0.057	2:10:16
4003	0.018	0.014	0.026	3:16:19
4004	0.006	0.010	0.041	2:36:23
4005	0.002	0.001	-0.039	5:35:53

Volby volneho stanoviska
 Metoda volneho stanoviska : 2D+H
 Meritko : Pouze odhadnout
 Přesnosti
 Chyba vzdalenosti : 0.003 m
 PPM vzdalenosti : 3.0
 Vodorovna chyba : 0 mgon
 Vertik.chyba : 0 mgon

Stanovisko
 Jmeno bodu : 5001
 vyska pristroje : 0.000 m

Měření

VZ	Bod	Odch.HU	Odch.VU	Odch.X	Odch.Y	Odch.V	H	V	HU	VU	SD	VH	Typ cile	PC	HU	VU	SD	Nast.	
VZ	4001	0.0102	-0.0004	-0.008	0.000	Použit	Použit	Použit	Použit	Použit	Použit	1.650	Hranol	ATP1	360	88.8538	97.2213	28.227	1VP1P
	4002	-0.0024	0.0202	-0.010	0.008	0.006	-0.020	Použit	Použit	Použit	Použit	1.650	Hranol	ATP1	360	215.3577	99.5336	63.690	2VP1P

PROTOKOL – POLÁRNÍ METODA

vyska pristroje : 0.000 m

Mereni

VZ	Bod	Odch.HU	Odch.VU	Odch.SD	Odch.X	Odch.Y	Odch.V	H	V	HU	VU	SD	VH	Typ cile	PC	HU	VU	SD	Nast.
VZ	4004	0.0088	0.0627	0.007	0.008	-0.005	-0.045	Pouzit	Pouzit	Pouzit	Pouzit	Pouzit	1.650	Hranol	ATP1 360	ATP1 360	203.2133	99.1119	45.164
	4005	0.0251	-0.1272	-0.008	-0.010	-0.008	0.047	Pouzit	Pouzit	Pouzit	Pouzit	Pouzit	1.650	Hranol	ATP1 360	381.9041	99.8171	23.360	1VP1P
	4003	-0.0056	0.0153	-0.012	0.006	0.015	-0.030	Pouzit	Pouzit	Pouzit	Pouzit	Pouzit	2.650	Hranol	ATP1 360	111.6197	95.1509	126.028	3VP1P

Vysledky

Vypocitane meritko : 0.999910572699

Vypocitany X : 1052713.274 m

Vypocitany Y : 807610.482 m

Vypocitany H : 275.600 m

So Y : 8 mm

So X : 10 mm

So V : 41 mm

Volby volneho stanoviska

Metoda volneho stanoviska : 2D+H

Meritko : Pouze odhadnout

Přesnosti

Chyba vzdalenosti : 0.003 m

PPM vzdalenosti : 3.0

Vodorovna chyba : 0 mgon

Vertik.chyba : 0 mgon

Stanovisko

Jmeno bodu : 5004

vyska pristroje : 0.000 m

Mereni

VZ	Bod	Odch.HU	Odch.VU	Odch.SD	Odch.X	Odch.Y	Odch.V	H	V	HU	VU	SD	VH	Typ cile	PC	HU	VU	SD	Nast.
VZ	4003	-0.0022	-0.0210	0.005	0.005	0.002	0.011	Pouzit	Pouzit	Pouzit	Pouzit	Pouzit	1.650	Hranol	ATP1 360	319.3439	101.2836	32.436	1VP1P
	4002	0.0009	0.0109	-0.004	-0.005	0.001	-0.029	Pouzit	Pouzit	Pouzit	Pouzit	Pouzit	1.650	Hranol	ATP1 360	299.0018	100.2943	171.945	2VP1P
	4004	-0.0005	0.0071	-0.001	-0.001	-0.002	-0.017	Pouzit	Pouzit	Pouzit	Pouzit	Pouzit	1.650	Hranol	ATP1 360	287.9895	103.5180	155.709	3VP1P

Vysledky

Vypocitane meritko : 0.999944351330

Vypocitany X : 1052573.903 m

Vypocitany Y : 807537.658 m

Vypocitany H : 284.803 m

So Y : 4 mm

So X : 2 mm

So V : 21 mm



VISIONPLAN-3D s.r.o.

Sokolovská 784/41
323 00, Plzeň
IČO: 09565884
DIČ: CZ09565884

tel.: +420 737 770 270
e-mail: faiferlik@visionplan.cz
www.VISIONPLAN.cz

Paré:

B.1. SEZNAM SOUŘADNIC



Souřadnicový systém: S-JTSK

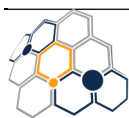
Výškový systém: Bpv

Č.b.	Y[m]	X[m]	Z[m]	Popis				
4001	807652.741	1052792.955	283.110		50	807651.179	1052785.277	282.134 DLAZBAB
4002	807599.007	1052734.524	282.329		51	807651.178	1052785.232	282.083 BETON
4003	807558.161	1052599.034	282.510		52	807651.468	1052784.158	282.082 VJEZD
5001	807624.550	1052792.862	283.526		53	807648.251	1052784.126	282.035 VJEZD
1	807673.046	1052792.493	284.255	DLAZBAB	54	807647.835	1052784.122	282.022 VCHOD
2	807672.936	1052791.077	284.224	OBRB	55	807646.927	1052784.092	281.987 VCHOD
3	807672.943	1052790.927	284.075	DLAZBAB	56	807644.597	1052783.940	281.760 RDO
4	807672.965	1052790.802	284.071	ASF	57	807643.528	1052783.838	281.727 VRATKA
5	807672.448	1052788.128	284.008	OSA	58	807643.540	1052784.909	281.725 BETON
6	807672.224	1052785.467	283.941	ASF	59	807643.507	1052784.955	281.757
7	807672.214	1052785.328	284.013	OBRB		DLAZBABPATA		
8	807671.585	1052785.385	284.042	OBRB	60	807648.624	1052785.133	282.021 BETON
9	807672.790	1052784.576	283.925	BETON	61	807648.615	1052785.190	282.068 DLAZBAB
10	807672.650	1052783.075	284.010	BETON	62	807650.252	1052785.274	282.108 VODA
11	807672.638	1052783.125	283.784	BETON	63	807651.765	1052786.585	282.915
12	807672.729	1052784.187	283.660	BETON		OBRDLAZBA		
13	807671.896	1052782.334	283.689	RDO	64	807651.791	1052786.722	282.786 ASF
14	807671.467	1052784.358	283.675	SCHODY	65	807651.865	1052789.632	282.848 OSA
15	807670.952	1052784.343	283.369	SCHODY	66	807651.257	1052792.494	282.874 ASF
16	807670.338	1052784.029	283.325	BETON	67	807651.249	1052792.780	283.023 OBRB
17	807670.330	1052784.239	283.537	TEREN	68	807651.246	1052792.611	282.876 DLAZBAB
18	807670.846	1052784.464	283.601	TEREN	69	807651.452	1052794.209	283.077 DLAZBAB
19	807672.764	1052784.365	283.823	TEREN	70	807645.226	1052794.589	282.813 DLAZBAB
20	807664.868	1052787.347	283.551		71	807645.175	1052793.025	282.570 DLAZBAB
	SACHTAKUL				72	807645.189	1052793.149	282.719 OBRB
21	807665.525	1052786.089	283.559	ASF	73	807645.178	1052792.891	282.577 ASF
22	807665.497	1052785.931	283.705	OBRB	74	807643.172	1052793.174	282.638 OBRB
23	807663.965	1052786.072	283.622	OBRB	75	807642.186	1052793.190	282.504 OBRB
24	807663.962	1052786.220	283.487	ASF	76	807642.840	1052794.643	282.716
25	807662.522	1052786.319	283.408	ASF		ASFDLAZBA		
26	807662.510	1052786.174	283.540	OBRB	77	807642.991	1052794.831	283.335 OPERNAK
27	807662.921	1052788.931	283.473	OSA	78	807645.377	1052794.665	283.651 OPERNAK
28	807663.184	1052791.637	283.509	ASF	79	807653.515	1052794.258	284.240 OPERNAK
29	807663.190	1052791.752	283.511	DLAZBAB	80	807673.358	1052792.586	285.760 OPERNAK
30	807663.324	1052793.279	283.686	DLAZBAB	81	807636.377	1052794.368	282.470
31	807663.175	1052791.908	283.658	OBRB		ASFDLAZBA		
32	807658.108	1052792.314	283.373	OBRB	82	807635.982	1052794.474	282.694 OPERNAK
33	807658.112	1052792.172	283.221	DLAZBAB	83	807633.971	1052794.518	282.963 OPERNAK
34	807658.109	1052792.054	283.223	ASF	84	807629.240	1052794.215	283.111 OPERNAK
35	807658.764	1052793.677	283.439	DLAZBAB	85	807625.243	1052793.864	283.146 OPERNAK
36	807658.521	1052786.351	283.293	OBRB	86	807635.700	1052792.914	282.215 ASF
37	807658.006	1052786.658	283.116	VPUST	87	807635.655	1052793.037	282.210 DLAZBAB
38	807657.547	1052786.395	283.128		88	807635.710	1052793.164	282.262 OBRB
	OBRDLAZBA				89	807634.688	1052793.090	282.338 OBRB
39	807655.547	1052786.454	283.012		90	807632.712	1052792.928	282.299 OBRB
	OBRDLAZBA				91	807631.719	1052792.855	282.164
40	807654.561	1052786.501	283.066	OBRB		OBRDLAZBA		
41	807658.172	1052785.000	282.955	BETON	92	807631.762	1052792.717	282.142 DLAZBAB
42	807657.466	1052785.024	282.875		93	807631.777	1052792.591	282.146 ASF
	BETONDLAZBA				94	807631.598	1052794.213	282.244 DLAZBAB
43	807655.491	1052785.158	282.792		95	807633.282	1052794.358	282.345 DLAZBAB
	BETONDLAZBA				96	807629.477	1052793.286	282.118 LAMPA
44	807657.030	1052784.299	282.846	VCHOD	97	807628.330	1052793.021	282.018 ZRCADLO
45	807656.087	1052784.354	282.827	VCHOD	98	807625.847	1052793.468	281.902 INFO
46	807654.635	1052784.388	282.763	RDO	99	807625.127	1052793.721	281.835 TEREN
47	807652.148	1052785.255	282.670	SCHODY	100	807626.119	1052791.702	281.951
48	807651.518	1052785.235	282.093	SCHODY		SACHTAKUL		
49	807652.159	1052785.319	282.729	DLAZBAB	101	807628.353	1052791.683	282.081 ASF
					102	807627.248	1052791.294	282.064 ASF
					103	807621.481	1052791.267	281.663 ASF
					104	807616.378	1052792.528	281.174 INFO
					105	807614.449	1052792.555	280.969 INFO





106	807614.041	1052792.342	280.937	INFO	162	807615.246	1052778.495	281.772	ZNACKA
107	807612.721	1052792.252	280.826	INFO	163	807615.709	1052778.752	281.799	
108	807616.780	1052792.811	281.181	TEREN		OPERNABNST			
109	807611.211	1052787.673	280.889	OSA	164	807615.799	1052779.024	281.804	SVODIDLO
110	807602.071	1052786.992	279.815	OSA	165	807616.111	1052778.806	281.814	OPERNAB
111	807606.370	1052790.098	280.207	ASF	166	807616.131	1052778.799	281.798	ASF
112	807601.626	1052789.460	279.727	ASF	167	807616.031	1052778.805	281.811	OBRB
113	807601.550	1052790.175	279.705		168	807615.962	1052778.278	281.848	OBRB
	SLOUPBETON				169	807616.086	1052778.283	281.806	ASF
114	807602.067	1052790.405	279.686	BETON	170	807615.944	1052777.758	281.793	ASF
115	807603.986	1052790.857	279.807	BETON	171	807615.852	1052777.783	281.874	OBRB
116	807603.877	1052792.082	280.004	SCHODY	172	807615.491	1052776.891	281.945	OBRB
117	807601.901	1052791.908	280.013	SCHODY	173	807615.617	1052776.784	281.785	ASF
118	807601.922	1052791.175	279.262		174	807615.579	1052776.807	281.937	OPERNAB
	ROURA300BETON				175	807614.276	1052777.214	282.062	OPERNAB
119	807604.104	1052791.396	279.454		176	807615.097	1052776.992	281.894	NST
	ROURA300BETON				177	807614.805	1052776.148	281.939	ZABRADLI
120	807603.933	1052792.125	279.723	TEREN	178	807608.610	1052759.066	281.781	ZABRADLI
121	807614.624	1052792.888	280.983	TEREN	179	807605.658	1052751.184	281.645	ZABRADLI
122	807624.123	1052788.475	281.988	TEREN	180	807608.009	1052759.847	281.758	OPERNAB
123	807618.773	1052782.383	281.847	TEREN	181	807607.649	1052759.935	281.767	OPERNAB
124	807603.144	1052784.427	279.946	ASF	182	807607.403	1052759.256	281.766	OPERNAB
125	807603.166	1052784.178	279.970	OBRB	183	807609.040	1052758.718	281.702	OPERNAB
126	807603.268	1052783.487	279.735		184	807609.045	1052758.693	281.639	ASF
	PLOTREVENY				185	807608.941	1052758.707	281.692	OBRB
127	807604.178	1052784.157	280.027	OPERNAB	186	807608.256	1052756.828	281.651	OBRB
128	807605.174	1052784.218	280.324	OPERNAB	187	807608.516	1052757.663	281.621	SVODIDLO
129	807604.135	1052784.257	280.108	OBRB	188	807608.008	1052756.216	281.637	SVODIDLO
130	807604.095	1052784.384	280.130	OBRB	189	807607.508	1052754.778	281.667	SVODIDLO
131	807605.151	1052784.511	280.369	OBRB	190	807607.000	1052753.391	281.695	SVODIDLO
132	807607.509	1052784.715	280.680	OBRB	191	807606.496	1052751.966	281.727	SVODIDLO
133	807607.506	1052784.881	280.483	ASF	192	807605.995	1052750.554	281.757	SVODIDLO
134	807607.518	1052784.840	280.701	OPERNAB	193	807605.478	1052749.139	281.786	SVODIDLO
135	807607.555	1052784.435	280.684	OPERNAB	194	807604.967	1052747.750	281.803	SVODIDLO
136	807607.748	1052784.211	279.958		195	807604.449	1052746.308	281.848	SVODIDLO
	PLOTREVENY				196	807603.958	1052744.909	281.884	SVODIDLO
137	807607.694	1052784.385	280.112	TEREN	197	807603.445	1052743.536	281.923	SVODIDLO
138	807607.944	1052784.510	280.740	ZNACKA	198	807602.924	1052742.108	281.969	SVODIDLO
139	807606.371	1052784.621	280.534	SVODIDLO	199	807602.409	1052740.707	281.961	SVODIDLO
140	807607.735	1052784.701	280.722	SVODIDLO	200	807601.871	1052739.284	282.012	SVODIDLO
141	807609.135	1052784.759	280.926	SVODIDLO	201	807601.332	1052737.895	282.043	SVODIDLO
142	807609.166	1052784.520	280.926	OPERNAB	202	807600.818	1052736.524	282.059	SVODIDLO
143	807609.377	1052784.942	280.956	OPERNAB	203	807600.580	1052737.026	281.918	ZABRADLI
144	807609.368	1052784.981	280.729	ASF	204	807599.818	1052735.516	281.932	ZNACKA
145	807611.342	1052784.846	280.979	ASF	205	807601.442	1052741.650	281.770	NST
146	807611.119	1052784.711	281.168	SVODIDLO	206	807603.861	1052746.837	281.772	ZNACKA
147	807611.327	1052784.735	281.186	OPERNAB	207	807608.112	1052758.656	281.539	ZNACKA
148	807611.243	1052784.352	281.177	OPERNAB	208	807607.795	1052758.961	281.444	NST
149	807611.658	1052784.152	280.379		209	807612.929	1052779.315	280.390	PATA
	PLOTDRATENY				210	807611.633	1052780.653	280.049	
150	807612.866	1052783.998	281.362	SVODIDLO		PLOTDRATENY			
151	807614.231	1052782.604	281.545	SVODIDLO	211	807611.166	1052780.628	280.093	RDO
152	807615.219	1052781.027	281.699	SVODIDLO	212	807611.468	1052774.047	280.055	RDO
153	807613.556	1052783.664	281.303	ASF	213	807612.039	1052773.979	280.202	PATA
154	807613.523	1052783.640	281.448	OPERNAB	214	807612.685	1052778.451	280.436	PATA
155	807613.212	1052783.338	281.424	OPERNAB	215	807614.241	1052777.235	281.228	NST
156	807613.252	1052783.268	280.632	TEREN	216	807613.192	1052774.346	280.599	NST
157	807614.857	1052780.687	280.899	PATA	217	807610.833	1052770.774	280.027	
158	807614.826	1052780.895	281.689	OPERNAB		PLOTDRATENY			
159	807615.183	1052781.141	281.688	OPERNAB	218	807607.259	1052764.736	278.719	
160	807615.276	1052781.200	281.628	ASF		PLOTDRATENY			
161	807615.134	1052780.730	281.706	ZNACKA	219	807607.823	1052759.951	279.982	NST



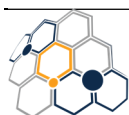


220	807611.075	1052768.674	280.222	NST	275	807605.921	1052732.697	282.276	OBRB
222	807605.909	1052760.578	278.684	OPERNAB	276	807606.922	1052732.639	281.979	ZNACKA
223	807605.598	1052759.906	278.595		277	807606.838	1052733.042	281.947	SVODIDLO
	OPERNABZST				278	807607.382	1052734.553	281.930	SVODIDLO
224	807602.976	1052764.360	276.366		279	807607.578	1052734.827	281.911	NST
	PLOTDRATENY				280	807607.782	1052734.546	281.804	ZABRADLI
225	807599.055	1052760.709	274.602		281	807609.254	1052736.991	281.653	NST
	PLOTDRATENY				282	807608.049	1052736.525	281.910	SVODIDLO
226	807599.449	1052760.184	274.686	PATA	283	807608.682	1052738.415	281.861	SVODIDLO
227	807604.185	1052755.330	278.600	PATA	284	807609.348	1052740.235	281.797	SVODIDLO
228	807603.540	1052755.650	278.545	NST	285	807610.042	1052742.145	281.818	SVODIDLO
229	807599.441	1052753.810	276.090	STROM5X	286	807610.690	1052743.977	281.775	SVODIDLO
230	807597.641	1052750.134	275.985	STROM7X	287	807612.641	1052745.038	281.416	NST
231	807594.925	1052745.905	274.564	PATA	288	807611.380	1052745.868	281.748	SVODIDLO
232	807594.207	1052745.298	274.439	STROM	289	807612.092	1052747.738	281.712	SVODIDLO
233	807593.417	1052746.232	274.183		290	807612.789	1052749.647	281.693	SVODIDLO
	PLOTDRATENY				291	807613.484	1052751.504	281.639	SVODIDLO
234	807599.461	1052742.844	278.513	PATA	292	807614.210	1052753.342	281.614	SVODIDLO
235	807598.858	1052743.132	278.487	NST	293	807614.940	1052755.235	281.557	SVODIDLO
236	807597.132	1052738.135	278.569	NST	294	807615.651	1052757.091	281.572	SVODIDLO
237	807597.600	1052737.890	278.594	PATA	295	807616.354	1052758.934	281.545	SVODIDLO
238	807597.018	1052735.958	279.036		296	807617.050	1052760.817	281.523	SVODIDLO
	OPERNABZST				297	807617.760	1052762.688	281.571	SVODIDLO
239	807596.822	1052735.220	279.197	OPERNAB	298	807618.472	1052764.597	281.541	SVODIDLO
240	807598.558	1052734.469	280.445	NST	299	807619.143	1052766.407	281.562	SVODIDLO
241	807596.479	1052730.208	280.176	NST	300	807620.844	1052767.033	281.366	NST
242	807596.757	1052728.914	280.064	KAMEN	301	807620.664	1052767.799	281.441	NST
243	807642.412	1052789.897	282.379	OSA	302	807619.940	1052768.310	281.580	SVODIDLO
244	807642.346	1052788.578	282.339		303	807620.720	1052770.139	281.526	SVODIDLO
	SACHTAKUL				304	807621.587	1052771.926	281.587	SVODIDLO
245	807633.321	1052788.771	282.098	OSA	305	807622.513	1052773.698	281.624	SVODIDLO
246	807626.002	1052784.773	281.958	OSA	306	807623.194	1052774.785	281.607	SVODIDLO
247	807618.449	1052774.317	281.721	OSA	307	807623.964	1052775.878	281.562	SVODIDLO
248	807619.070	1052773.185	281.694		308	807624.774	1052776.942	281.527	SVODIDLO
	SACHTAKUL				309	807625.645	1052777.938	281.553	SVODIDLO
249	807615.131	1052762.322	281.586		310	807626.524	1052778.954	281.484	SVODIDLO
	SACHTAKUL				311	807627.445	1052779.891	281.553	SVODIDLO
250	807640.170	1052786.315	282.322	OBRB	312	807628.586	1052781.137	281.750	SVODIDLO
251	807640.168	1052786.462	282.191	ASF	313	807627.866	1052776.630	281.546	
252	807635.200	1052785.332	281.965	ASF		SLOUPBETON			
253	807635.184	1052785.431	281.988	VPUST	314	807622.472	1052770.534	281.405	NST
254	807635.227	1052785.188	282.120	OBRB	315	807630.890	1052778.312	281.514	NST
255	807632.439	1052784.069	282.043	OBRB	316	807640.575	1052784.354	281.809	NST
256	807632.384	1052784.231	281.913	ASF	317	807641.280	1052784.135	281.663	PATA
257	807629.010	1052782.064	281.783	ASF	318	807637.572	1052781.956	281.314	PATA
258	807629.096	1052781.936	281.895	OBRB	319	807638.602	1052781.105	281.386	
259	807626.151	1052779.224	281.806	OBRB		PLOTDRATENY			
260	807626.085	1052779.323	281.752	ASF	320	807633.431	1052778.772	280.727	PATA
261	807624.021	1052777.024	281.727	ASF	321	807632.386	1052777.265	280.317	PATA
262	807624.100	1052776.905	281.778	OBRB	322	807633.514	1052777.432	280.514	STROM2X
263	807621.018	1052771.926	281.721	OBRB	323	807632.524	1052774.938	279.978	
264	807620.899	1052771.992	281.656	ASF		PLOTDRATENY			
265	807618.910	1052767.368	281.608	ASF	324	807632.038	1052774.473	279.265	
266	807619.033	1052767.327	281.667	OBRB		PLOTDRATENY			
267	807617.059	1052762.208	281.612	OBRB	325	807631.271	1052774.705	279.382	PATA
268	807616.935	1052762.244	281.548	ASF	4004	807567.302	1052726.520	274.536	
269	807616.751	1052762.279	281.549	VPUST	4005	807633.817	1052714.134	274.021	
270	807611.198	1052764.236	281.580	VPUST	5002	807579.067	1052720.452	276.040	
271	807613.847	1052762.851	281.625	OSA	326	807574.191	1052733.389	274.248	VJEZD
272	807603.397	1052734.038	282.184	OSA	327	807578.545	1052731.225	274.238	VJEZD
273	807601.013	1052727.530	282.372	OSA	328	807579.819	1052730.794	274.154	VRATKA
274	807606.634	1052734.630	282.123	OBRB	329	807580.792	1052730.359	274.138	VJEZD





330	807584.549	1052728.651	274.119	VJEZD	385	807553.596	1052700.491	270.949	TEREN
331	807586.369	1052728.016	274.070		386	807554.744	1052705.527	271.465	TEREN
	PLOTDRATENY				387	807548.662	1052688.494	270.814	TEREN
332	807589.004	1052733.276	274.149	PATA	388	807548.294	1052685.481	270.427	BREH
333	807589.098	1052729.933	274.115	PATA	389	807567.753	1052681.375	270.694	BREH
334	807589.198	1052728.102	274.126		390	807568.195	1052680.765	270.209	DNO
	PATAKAMEN				391	807581.951	1052680.934	270.280	DNO
335	807590.731	1052724.827	274.187		392	807581.802	1052682.190	270.659	BREH
	PATAKAMEN				393	807583.605	1052684.171	270.772	BREH
336	807594.633	1052722.448	274.208		394	807583.980	1052683.107	270.432	DNO
	PATAKAMEN				395	807586.415	1052682.122	270.363	DNO
337	807595.976	1052723.674	276.173		396	807587.555	1052682.462	270.779	BREH
	PATAKAMEN				397	807587.164	1052679.362	270.713	BREH
338	807596.972	1052723.761	276.380		398	807586.362	1052679.046	270.014	DNO
	PATAKAMEN				399	807592.142	1052674.837	270.076	DNO
339	807596.785	1052722.865	276.325	KAMEN	400	807593.034	1052675.330	270.700	BREH
340	807594.500	1052722.100	274.044	ZLAB	401	807593.262	1052677.567	270.713	BREH
341	807593.189	1052722.480	274.061	ZLAB	402	807591.221	1052679.362	270.851	BREH
342	807594.443	1052721.715	274.159	ASF	403	807589.848	1052677.792	270.743	BREH
343	807592.728	1052722.361	274.163	ASF	404	807596.386	1052682.126	271.133	INFO
344	807590.816	1052723.645	274.027	VPUST	405	807533.344	1052620.493	273.412	NST
345	807579.066	1052729.270	274.087	ZLAB	406	807535.426	1052623.956	272.126	TEREN
346	807578.763	1052729.049	274.217	ASF	407	807538.041	1052622.977	272.320	STROM
347	807572.958	1052732.294	274.265	ASF	408	807538.078	1052620.401	273.138	STROM
348	807573.147	1052732.666	274.074	ZLAB	409	807542.157	1052618.762	273.257	STROM
349	807567.514	1052726.290	274.519	ASF	410	807536.805	1052629.846	270.947	PATA
350	807577.348	1052721.616	274.371	ASF	411	807538.411	1052635.187	270.617	BREH
351	807585.416	1052719.155	274.259	ASF	412	807538.600	1052635.985	270.244	DNO
352	807589.573	1052718.832	274.229	ASF	413	807542.699	1052624.984	271.575	PATA
353	807591.209	1052718.907	274.235	ASF	414	807546.994	1052622.120	271.828	PATA
354	807593.100	1052718.203	274.226	ASF	415	807545.439	1052619.516	272.384	TEREN
355	807587.287	1052716.101	274.158	VPUST	416	807553.893	1052620.614	271.774	PATA
356	807591.668	1052715.133	274.138	NST	417	807556.551	1052615.849	272.275	PATA
357	807591.304	1052714.321	273.934	NST	418	807557.684	1052620.985	271.445	TEREN
358	807590.338	1052713.209	273.964	NST	419	807558.042	1052627.738	270.714	BREH
359	807588.348	1052712.499	274.002	NST	420	807558.225	1052629.095	270.445	DNO
360	807585.643	1052710.101	273.557	NST	421	807544.583	1052617.115	273.568	NST
361	807582.769	1052712.488	273.909	NST	422	807547.254	1052617.214	273.771	NST
362	807582.123	1052712.234	273.927	INFO	423	807549.281	1052615.239	273.710	NST
363	807580.333	1052711.140	273.807	INFO	424	807551.596	1052613.443	273.724	NST
364	807579.556	1052710.941	273.887	NST	425	807554.849	1052612.398	273.801	NST
365	807570.308	1052711.070	273.928	NST	426	807555.337	1052612.257	273.663	NST
366	807566.265	1052713.629	274.147	NST	427	807554.719	1052611.362	273.852	CESTA
367	807563.659	1052715.803	274.198	NST	428	807554.267	1052608.730	273.900	CESTA
368	807571.788	1052709.117	272.546	STROM	429	807544.688	1052611.258	273.846	CESTA
369	807560.119	1052711.778	272.151	PATA	430	807543.868	1052613.824	273.744	CESTA
370	807562.778	1052713.214	272.611	PATA	431	807553.887	1052607.983	274.013	
371	807563.821	1052712.390	272.514	PATA		PATAKAMEN			
372	807563.107	1052710.196	272.187	PATA	432	807551.138	1052608.676	273.956	
373	807569.507	1052706.754	271.844	PATA		PATAKAMEN			
374	807583.880	1052707.417	271.850	PATA	433	807547.780	1052608.009	274.053	
375	807584.626	1052709.554	272.565			PATAKAMEN			
	ROURA400BETON				434	807544.989	1052605.706	274.261	
376	807586.194	1052705.576	271.666	PATA		PATAKAMEN			
377	807589.708	1052705.201	271.552	PATA	435	807543.064	1052602.750	274.420	
378	807592.626	1052708.615	271.815	PATA		PATAKAMEN			
379	807594.074	1052711.527	272.168	PATA	436	807539.126	1052604.856	273.754	TEREN
380	807595.613	1052694.540	271.177	TEREN	437	807536.118	1052605.790	273.624	TEREN
381	807588.329	1052695.680	270.952	TEREN	438	807538.667	1052597.676	274.285	TEREN
382	807589.370	1052700.272	271.348	TEREN	439	807540.670	1052596.466	274.537	PATA
383	807575.459	1052701.276	271.445	TEREN	440	807537.153	1052589.655	275.034	PATA
384	807574.169	1052697.286	271.079	TEREN	441	807532.623	1052585.920	275.376	PATA



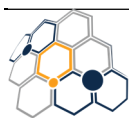


442	807529.154	1052581.430	275.979	PATA	498	807572.102	1052607.335	273.437	OPERNAB
443	807527.817	1052580.647	275.690	PATA	499	807572.372	1052608.353	273.363	OPERNAB
444	807522.951	1052576.195	276.534	PATA	500	807573.509	1052608.077	273.369	OPERNAB
445	807516.975	1052575.288	276.470	PATA	501	807573.539	1052608.305	273.206	OPERNAB
446	807505.149	1052572.530	277.397	PATA	502	807572.731	1052609.658	272.408	OPERNAB
447	807501.478	1052566.002	279.365	PATA	503	807572.742	1052609.690	272.196	OPERNAB
448	807499.818	1052560.818	280.708	PATA	504	807573.856	1052609.564	272.403	OPERNAB
449	807498.029	1052556.217	281.848	PILIR	505	807574.038	1052610.200	272.062	OPERNAB
450	807496.243	1052555.582	281.797	PILIR	506	807574.398	1052611.599	271.898	OPERNAB
451	807492.894	1052557.779	281.606	TEREN	507	807574.415	1052611.626	271.724	OPERNAB
452	807492.548	1052557.405	282.143	OPERNAB	508	807573.323	1052611.920	271.899	OPERNAB
453	807500.518	1052560.785	281.521	OPERNAB	509	807573.147	1052607.023	273.032	SCHODY
454	807495.740	1052554.727	285.558	OPERNAB	510	807572.154	1052607.335	273.040	SCHODY
455	807498.656	1052555.864	285.350	OPERNAB	511	807572.460	1052608.542	273.024	SCHODY
456	807592.152	1052716.290	274.362	BG05-5A	512	807573.493	1052608.228	273.018	SCHODY
5003	807610.482	1052713.274	275.580		513	807573.845	1052609.664	271.757	SCHODY
457	807560.849	1052584.868	277.234	PATA	514	807572.852	1052609.973	271.773	SCHODY
458	807562.661	1052588.415	276.614	PATANST	515	807573.360	1052611.914	271.726	BETON
459	807567.586	1052587.470	276.710	PATANST	516	807573.397	1052611.946	271.509	BETON
460	807565.071	1052589.296	275.923	STROM	517	807574.374	1052611.627	271.529	BETON
461	807565.134	1052591.347	275.279	PATA	518	807574.374	1052611.602	271.723	BETON
462	807566.045	1052594.250	275.190	PATA	519	807574.948	1052617.977	271.235	BETON
463	807565.997	1052596.170	275.067		520	807574.714	1052618.055	271.232	BETON
	PATAKAMEN				521	807574.836	1052618.491	271.224	BETON
464	807566.733	1052598.441	274.683		522	807575.052	1052618.417	271.227	SCHODY
	PATAKAMEN				523	807576.009	1052618.108	271.226	SCHODY
465	807566.062	1052601.348	274.297		524	807576.083	1052618.152	271.226	BETON
	PATAKAMEN				525	807576.000	1052617.817	271.448	OPERNAB
466	807564.311	1052603.413	274.246		526	807576.189	1052617.702	271.450	BETON
	PATAKAMEN				527	807576.256	1052617.639	271.447	BETON
467	807562.011	1052604.883	274.169		528	807576.257	1052617.685	271.444	BETON
	PATAKAMEN				529	807576.130	1052617.817	271.434	LAT
468	807562.715	1052605.667	274.043	CESTA	530	807576.369	1052617.722	271.236	KANALEK
469	807563.717	1052607.852	273.995	CESTA	531	807576.442	1052618.011	271.239	KANALEK
470	807563.684	1052609.100	273.884	NST	532	807576.358	1052618.016	271.241	BETON
471	807563.946	1052608.333	273.999	NST	533	807576.590	1052617.983	271.231	
472	807565.627	1052607.968	274.045	NST		KAMENBETONBREH			
473	807570.698	1052606.474	274.281	NST	534	807576.499	1052617.679	271.231	BETON
474	807571.633	1052606.262	274.290	BETONNST	535	807582.095	1052618.069	271.188	
475	807571.818	1052606.205	274.288	OPERNAB		KAMENBREH			
476	807571.738	1052605.899	274.296	SCHODY	536	807582.103	1052619.681	270.005	DNO
477	807572.640	1052605.609	274.276	SCHODY	537	807583.152	1052616.971	271.402	BREH
478	807572.342	1052604.577	274.286	SCHODY	538	807588.132	1052614.631	271.692	
479	807572.298	1052604.421	274.278	BETON		STROMBREH			
480	807571.211	1052604.754	274.299	BETON	539	807589.803	1052619.727	270.311	DNO
481	807572.329	1052604.416	274.490	OPERNAB	540	807586.333	1052607.360	271.995	PATA
482	807572.371	1052604.580	274.486	BETON	541	807581.550	1052609.832	271.936	PATA
483	807572.638	1052604.429	274.726	ZABRADLI	542	807583.852	1052615.281	271.677	STROM
484	807574.148	1052603.867	275.978	OPERNAB	543	807578.327	1052615.877	271.674	STROM
485	807574.188	1052604.050	275.972	SCHODY	544	807578.609	1052614.002	271.630	
486	807574.469	1052605.079	275.960	SCHODY		SACHTAKUL			
487	807574.743	1052605.141	275.958	ZABRADLI	545	807577.568	1052611.238	271.827	PATA
488	807574.514	1052605.302	275.954	OPERNAB	546	807574.837	1052612.498	271.665	
489	807574.765	1052605.237	275.951	OPERNAB		BETONPATA			
490	807573.019	1052605.695	274.715	OPERNAB	548	807572.654	1052609.982	272.182	
491	807572.998	1052605.637	274.713	ZABRADLI		BETONPATA			
492	807572.976	1052605.506	274.716	BETON	549	807570.266	1052610.422	272.389	PATA
493	807572.965	1052605.531	274.479	BETON	550	807571.891	1052613.040	271.974	STROM3X
494	807572.796	1052605.580	274.467	OPERNAB	551	807569.706	1052613.714	271.957	STROM3X
495	807573.248	1052607.248	273.427	OPERNAB	552	807564.888	1052612.573	272.113	PATA
496	807571.912	1052607.399	273.447	BETON	553	807567.332	1052620.908	271.434	BREH
497	807572.192	1052608.363	273.373	BETON	554	807568.642	1052623.550	270.356	DNO





555	807574.143	1052618.433	271.297	BREH	614	807621.744	1052745.848	274.890	BETON
556	807568.974	1052606.479	274.282	INFO	615	807622.682	1052745.441	274.737	BETON
557	807567.180	1052609.542	273.399	STROM	616	807622.963	1052745.336	274.735	BETON
558	807574.084	1052605.793	274.079	NST	617	807622.365	1052747.420	274.252	
559	807575.775	1052606.736	274.003	NST		ROURA300PLAST			
560	807574.963	1052605.445	274.216	RDO	618	807622.429	1052747.594	274.140	DNO
561	807577.885	1052604.635	274.480	RDO	619	807623.356	1052747.245	274.141	DNO
562	807577.374	1052602.694	274.981	RDO	620	807621.772	1052745.784	274.238	DNO
563	807578.396	1052605.441	274.359	ZLAB	621	807622.651	1052745.418	274.136	DNO
564	807578.163	1052604.519	274.762	ZLAB	622	807622.339	1052748.309	274.833	PATA
565	807577.718	1052602.695	274.911	ZLAB	623	807620.509	1052748.686	275.357	STROM
566	807578.106	1052605.656	274.218	NST	624	807620.388	1052746.677	275.042	PATA
567	807578.415	1052604.247	274.835	NST	625	807620.832	1052745.199	274.989	BREH
568	807581.882	1052601.206	275.257		626	807623.039	1052745.184	274.328	BREH
	STROMNST				627	807619.848	1052741.299	274.444	BREH
569	807571.489	1052603.074	274.475	CESTA	628	807621.104	1052740.893	274.054	BREH
570	807570.330	1052601.014	274.417	CESTA	629	807620.762	1052741.039	273.945	DNO
571	807579.966	1052596.477	275.209	CESTA	630	807618.035	1052740.988	274.887	PATA
572	807580.475	1052599.081	275.148	CESTA	631	807616.398	1052731.923	274.280	BREHPATA
573	807579.111	1052594.054	275.345	TEREN	632	807621.436	1052764.412	278.730	ZST
574	807578.787	1052593.237	275.631	TEREN	633	807618.221	1052755.229	278.557	PATA
575	807578.534	1052591.867	275.717	PATA	634	807618.764	1052755.029	278.479	NST
576	807577.557	1052589.307	277.207	STROM	635	807615.242	1052744.749	278.351	NST
577	807573.974	1052589.432	276.782	STROM	636	807614.429	1052744.986	278.523	PATA
578	807573.327	1052584.986	278.382	STROM2X	637	807610.892	1052733.276	278.470	NST
579	807577.272	1052585.790	278.488	STROM	638	807609.558	1052731.435	278.628	BETONZST
580	807564.653	1052578.699	281.054	STROM2X	639	807609.272	1052730.742	278.784	BETON
581	807563.441	1052577.776	281.557	STROM2X	640	807606.923	1052731.432	280.401	NST
582	807554.433	1052581.291	281.807	STROM2X	641	807605.787	1052728.069	280.481	NST
583	807555.693	1052584.769	281.502	STROM2X	642	807604.746	1052726.045	280.230	
584	807556.891	1052589.301	282.050	STROM		KAMENNST			
585	807560.817	1052592.640	279.263	STROM	643	807611.835	1052730.761	277.132	
586	807623.372	1052762.597	277.218	STROM5X		ROURA150PLAST			
587	807628.588	1052766.381	276.269	PATA	644	807613.150	1052722.946	274.206	BREHPATA
588	807629.469	1052767.023	276.698	ZST	645	807612.701	1052722.861	274.299	
589	807627.979	1052763.520	275.834	NST		PATAKAMEN			
590	807627.299	1052763.411	275.433	PATA	646	807610.799	1052720.265	274.100	
591	807626.844	1052762.450	275.600	PATANST		PATAKAMEN			
592	807627.193	1052761.223	275.389	NST	647	807608.675	1052718.651	273.998	
593	807628.531	1052761.896	275.596	NST		PATAKAMEN			
594	807629.181	1052763.035	275.623	VRATKA	648	807607.755	1052718.301	273.921	PATAZLAB
595	807629.493	1052761.813	275.328	VRATKA	649	807605.195	1052718.547	273.966	ZLAB
596	807627.790	1052761.494	275.056	PATA	650	807602.978	1052719.087	274.000	ZLAB
597	807628.265	1052759.918	274.964	ZST	651	807609.979	1052718.641	273.909	ZLAB
599	807628.197	1052759.762	274.952	PRISE	652	807611.780	1052719.234	273.793	ZLAB
600	807627.081	1052757.057	274.828		653	807611.331	1052718.513	274.052	ZNACKA
	SLOUPBETON				654	807611.668	1052719.662	273.890	BREH
601	807624.753	1052753.495	274.682	ZSTPATA	655	807611.748	1052718.863	273.953	BETON
602	807623.906	1052754.624	275.069	PATA	656	807612.954	1052718.691	273.936	BETON
603	807624.301	1052758.383	275.491	PATA	657	807613.400	1052718.317	273.999	BREH
604	807624.941	1052756.025	275.135	NST	658	807614.977	1052722.157	273.857	BREH
605	807628.349	1052758.879	274.812		659	807615.411	1052722.573	273.944	RPL
	PLOTDRATENY				660	807618.418	1052722.000	273.958	VJEZD
606	807624.271	1052747.855	274.455		661	807621.890	1052721.342	273.894	VJEZD
	PLOTDRATENY				662	807627.668	1052720.209	273.889	
607	807623.735	1052747.445	274.750	BETON		PLOTDREVENY			
608	807623.367	1052747.295	274.750	BETON	663	807627.645	1052718.276	273.975	STROM
609	807622.420	1052747.649	274.895	BETON	664	807626.817	1052715.651	274.004	ASF
610	807623.463	1052747.566	274.754	BETON	665	807626.418	1052712.014	273.936	ASF
611	807622.522	1052747.919	274.904	BETON	666	807612.520	1052713.829	273.995	ASF
612	807622.258	1052748.055	274.899	BETON	667	807612.989	1052717.374	274.064	ASF
613	807621.478	1052745.951	274.890	BETON	668	807607.427	1052717.902	274.029	ASF



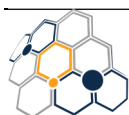


669	807603.606	1052718.600	274.066	ASF	727	807538.756	1052574.468	283.042	SVODIDLO
670	807601.233	1052715.236	274.134	ASF	728	807537.493	1052575.046	282.802	NST
671	807604.600	1052714.968	274.093	ASF	729	807535.388	1052572.589	283.057	NST
672	807604.681	1052712.345	273.973	STROM	730	807534.854	1052572.102	283.163	ZNACKA
673	807608.542	1052713.442	273.967	ZNACKA	731	807537.415	1052573.088	283.138	SVODIDLO
674	807609.253	1052714.481	274.050	RETARDER	732	807535.918	1052571.719	283.194	SVODIDLO
675	807609.054	1052714.717	274.055	RETARDER	733	807534.415	1052570.495	283.279	SVODIDLO
676	807609.289	1052714.913	274.052	RETARDER	734	807532.789	1052569.305	283.479	SVODIDLO
677	807609.773	1052715.223	274.099	RETARDER	735	807531.113	1052568.257	283.567	SVODIDLO
678	807609.431	1052715.838	274.107	RETARDER	736	807529.371	1052567.326	283.701	SVODIDLO
679	807609.931	1052716.359	274.106	RETARDER	737	807529.516	1052567.844	283.631	NST
680	807609.559	1052717.005	274.082	RETARDER	738	807527.594	1052566.438	283.800	SVODIDLO
681	807601.385	1052722.180	276.339		739	807525.779	1052565.621	283.873	SVODIDLO
	PATAKAMEN				740	807523.921	1052564.910	284.034	SVODIDLO
682	807602.760	1052721.308	276.020		741	807522.050	1052564.185	284.170	SVODIDLO
	PATAKAMEN				742	807520.171	1052563.511	284.168	SVODIDLO
683	807602.682	1052720.750	275.939	KAMEN	743	807519.764	1052563.874	284.166	NST
684	807600.689	1052712.848	273.776	NST	744	807518.291	1052562.828	284.323	SVODIDLO
685	807602.284	1052710.902	273.721	NST	745	807516.395	1052562.186	284.461	SVODIDLO
686	807604.307	1052709.519	273.567	NST	746	807514.446	1052561.542	284.580	SVODIDLO
687	807606.952	1052710.226	273.620	NST	747	807512.595	1052561.010	284.706	SVODIDLO
688	807608.989	1052711.916	273.865	NST	748	807510.655	1052560.331	284.866	SVODIDLO
689	807609.731	1052710.941	272.702		749	807508.615	1052559.564	284.927	SVODIDLO
	ROURA400BETON				750	807506.876	1052558.905	284.895	SVODIDLO
690	807612.260	1052718.841	273.424	DNO	751	807506.551	1052559.138	284.904	NST
691	807610.941	1052711.497	273.788	NST	752	807505.080	1052558.167	285.139	SVODIDLO
692	807611.871	1052707.413	273.283	NST	753	807503.265	1052557.382	285.254	SVODIDLO
693	807614.132	1052703.469	273.244	NST	754	807501.428	1052556.687	285.326	SVODIDLO
694	807621.569	1052699.228	272.817	NST	755	807500.456	1052556.318	285.370	SVODIDLO
695	807621.116	1052697.362	271.687	PATA	756	807499.525	1052555.937	285.503	SVODIDLO
696	807611.845	1052701.769	271.670	PATA	757	807495.225	1052554.335	285.728	SVODIDLO
697	807609.115	1052706.218	272.203	PATA	758	807495.077	1052553.615	285.966	ASF
698	807607.459	1052706.892	272.300	PATA	759	807495.815	1052550.465	286.106	OSA
699	807603.947	1052706.076	271.900	PATA	760	807515.314	1052557.894	284.974	OSA
700	807599.061	1052706.155	271.745	PATA	761	807514.484	1052561.059	284.698	ASF
701	807599.012	1052710.928	272.378	PATA	762	807525.702	1052565.076	284.018	ASF
702	807597.093	1052694.975	271.220	TEREN	763	807527.427	1052562.378	284.277	OSA
703	807614.730	1052687.839	271.257	TEREN	764	807540.383	1052569.799	283.597	OSA
704	807614.523	1052676.254	271.133	TEREN	765	807538.184	1052573.109	283.193	ASF
705	807612.454	1052666.197	270.663	BREH	766	807545.298	1052582.520	282.709	ASF
706	807612.500	1052665.255	270.047	DNO	767	807548.372	1052581.862	282.914	OSA
5004	807537.658	1052573.903	284.803		768	807548.928	1052590.159	282.429	ASF
707	807552.677	1052599.212	282.250	ASF	769	807552.510	1052598.746	282.258	ASF
708	807551.565	1052598.978	282.126	BETONNST	770	807554.869	1052597.700	282.317	OSA
709	807551.380	1052598.499	282.068	SVODIDLO	771	807557.443	1052597.046	282.246	ASF
710	807550.951	1052597.253	282.111	SVODIDLO	772	807558.049	1052596.742	282.165	NST
711	807550.317	1052595.852	282.121	NST	773	807558.402	1052596.436	281.938	
712	807550.223	1052595.346	282.159	SVODIDLO		ZNACKASVODIDLO			
713	807549.530	1052593.512	282.189	SVODIDLO	774	807558.025	1052595.471	281.925	SVODIDLO
714	807548.774	1052591.640	282.256	SVODIDLO	775	807556.623	1052591.694	282.163	SVODIDLO
715	807547.998	1052589.813	282.302	SVODIDLO	776	807555.276	1052587.950	282.329	SVODIDLO
716	807547.175	1052587.991	282.326	SVODIDLO	777	807554.421	1052588.385	282.570	ASF
717	807546.345	1052586.170	282.372	SVODIDLO	778	807555.444	1052588.465	282.444	NST
718	807545.457	1052584.391	282.517	SVODIDLO	779	807554.978	1052586.493	282.566	ZNACKA
719	807545.077	1052584.016	282.474	NST	780	807553.964	1052584.131	282.537	SVODIDLO
720	807544.458	1052584.372	282.277	ZNACKA	781	807554.257	1052584.450	282.479	NST
721	807544.511	1052582.651	282.530	SVODIDLO	782	807552.734	1052580.961	282.791	NST
722	807543.501	1052580.936	282.650	SVODIDLO	783	807553.318	1052581.253	282.629	ZNACKA
723	807542.420	1052579.238	282.777	SVODIDLO	784	807552.973	1052580.418	282.716	SVODIDLO
724	807541.316	1052577.607	282.839	SVODIDLO	785	807552.080	1052580.679	282.958	ASF
725	807541.108	1052577.819	282.805	NST	786	807552.970	1052576.359	282.931	ASF
726	807540.076	1052576.016	282.919	SVODIDLO	787	807552.952	1052577.531	282.875	NST



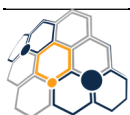


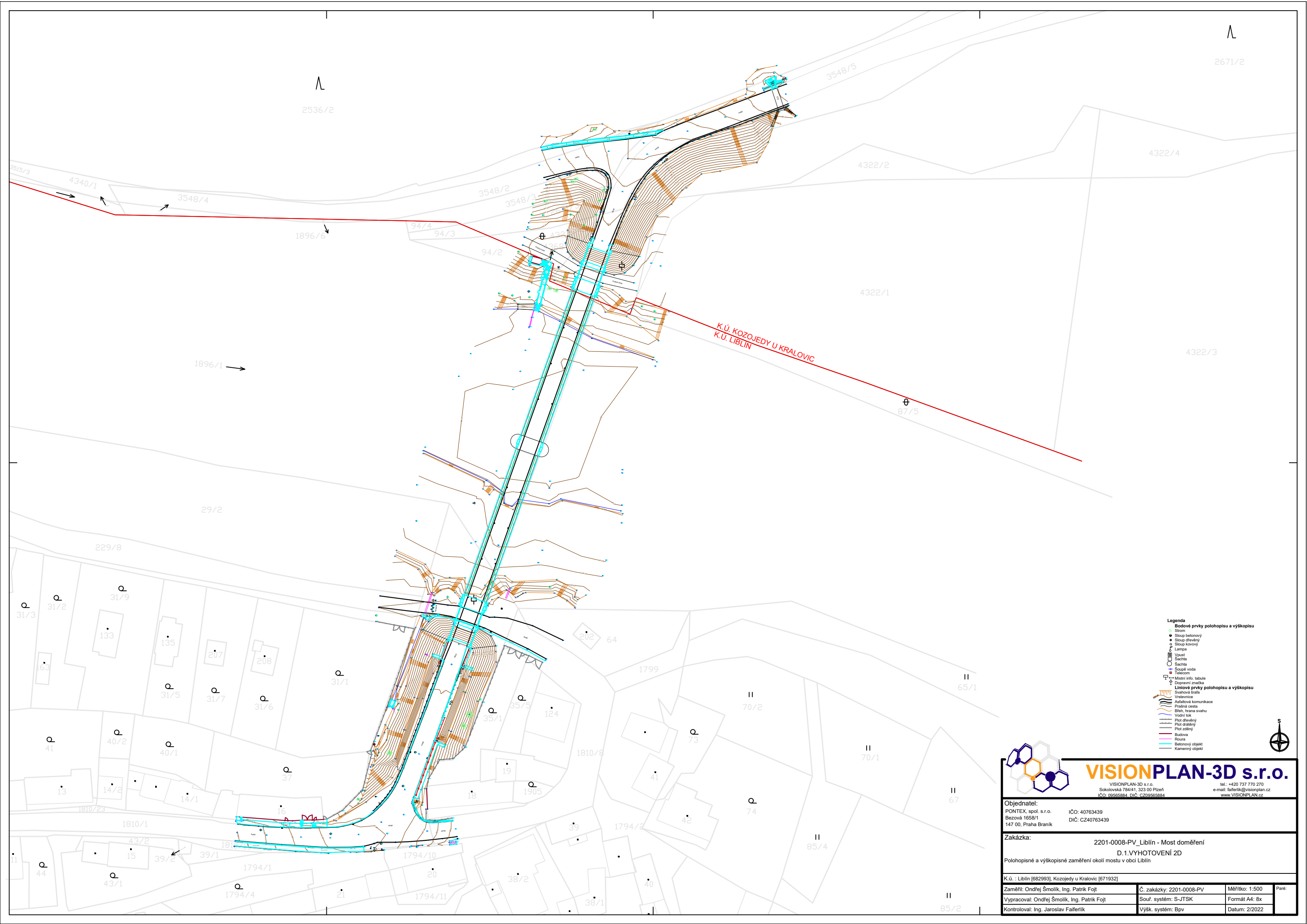
788	807553.787	1052576.710	282.634	SVODIDLO	850	807537.406	1052563.426	284.090	ASFBETON
789	807554.528	1052575.795	282.794	ZNACKA	851	807535.305	1052562.283	284.176	ASFBETON
790	807555.211	1052575.512	282.640	SVODIDLO	852	807537.790	1052563.318	284.004	BETON
791	807554.960	1052575.329	282.733	NST	853	807535.562	1052562.176	284.138	BETON
792	807556.665	1052574.790	282.548	NST	854	807535.597	1052562.035	284.140	OBRB
793	807556.123	1052575.210	282.532	SVODIDLO	855	807535.292	1052560.259	283.477	PATA
794	807554.970	1052574.793	282.743	ASF	856	807532.310	1052561.036	284.318	ASF
795	807558.070	1052575.076	282.376	SVODIDLO	857	807526.332	1052558.686	284.570	ASF
796	807560.066	1052575.082	282.268	SVODIDLO	858	807530.754	1052560.165	284.287	NST
797	807559.615	1052575.054	282.303	NST	859	807530.998	1052558.801	283.764	PATA
798	807563.022	1052575.484	281.987	SVODIDLO	860	807525.016	1052556.919	284.350	PATA
799	807564.927	1052575.825	281.851	SVODIDLO	861	807524.685	1052557.593	284.533	NST
800	807566.207	1052576.490	281.758	ZNACKA	862	807508.799	1052551.672	285.393	NST
801	807566.851	1052576.295	281.699	SVODIDLO	863	807508.649	1052550.516	285.200	PATA
802	807568.750	1052576.803	281.548	SVODIDLO	864	807508.302	1052548.887	285.603	PATA
803	807570.617	1052577.372	281.391	SVODIDLO	865	807508.611	1052546.175	286.306	PATA
804	807572.503	1052577.974	281.253	SVODIDLO	867	807502.140	1052546.070	285.335	BETON
805	807572.958	1052579.721	281.009	NST	868	807500.729	1052547.651	285.506	BETON
806	807573.647	1052577.332	281.250	ASF	869	807501.225	1052547.817	285.481	BETON
807	807565.492	1052575.327	281.832	ASF	870	807502.092	1052546.038	285.280	BETON
808	807559.837	1052574.312	282.264	ASF	871	807500.509	1052545.259	285.264	BETON
809	807575.159	1052573.342	281.310	OSA	872	807499.406	1052544.886	285.304	BETON
810	807574.245	1052568.569	281.512	ASF	873	807499.376	1052544.853	285.419	BETON
811	807574.230	1052568.372	281.348	BETON	874	807499.296	1052547.054	285.513	BETON
812	807574.467	1052567.656	281.383	BETON	875	807498.937	1052546.922	285.537	BETON
813	807574.264	1052568.505	281.522	BETON	876	807499.316	1052546.404	285.446	ZLAB
814	807574.569	1052567.530	281.519	OBRB	877	807497.145	1052546.112	285.740	ZLAB
815	807574.430	1052564.048	281.318	PATA	878	807499.399	1052546.029	284.536	
816	807569.622	1052564.328	281.802	PATA		BETONDNO			
817	807564.496	1052563.138	281.941	PATA	879	807499.682	1052546.117	284.428	VPUST
818	807571.173	1052566.783	281.767	OBRB	880	807499.392	1052547.086	284.506	VPUST
819	807571.123	1052566.927	281.635	BETON	881	807501.143	1052546.788	284.386	VPUST
820	807570.958	1052567.590	281.636	BETON	882	807501.375	1052546.831	284.510	
821	807570.966	1052567.777	281.783	BETON		BETONDNO			
822	807570.924	1052567.890	281.767	ASF	883	807503.144	1052548.585	285.604	TEREN
823	807568.661	1052571.463	281.832	OSA	884	807503.098	1052548.567	285.948	BETON
824	807564.244	1052565.742	282.321	OBRB	885	807502.887	1052549.106	285.976	BETON
825	807564.244	1052565.877	282.180	BETON	886	807502.817	1052548.777	285.976	ZABRADLI
826	807564.144	1052566.548	282.177	BETON	887	807502.894	1052549.213	285.792	TEREN
827	807564.070	1052566.727	282.316	BETON	888	807502.699	1052549.862	285.786	ASF
828	807563.973	1052566.887	282.322	ASF	889	807495.679	1052547.289	286.174	ASF
829	807553.231	1052565.684	283.102	ASF	890	807496.727	1052546.746	286.004	TEREN
830	807553.202	1052565.517	283.113	BETON	891	807496.803	1052546.732	286.298	BETON
831	807553.173	1052565.333	282.965	BETON	892	807497.007	1052546.204	286.257	BETON
832	807553.324	1052564.649	282.964	BETON	893	807497.223	1052546.594	286.246	ZABRADLI
833	807553.322	1052564.493	283.112	OBRB	894	807495.676	1052545.769	285.852	TEREN
834	807559.619	1052560.525	282.112	PATA	895	807495.882	1052545.290	285.962	ZNACKA
835	807557.493	1052561.845	281.914	STROM2X	896	807497.376	1052544.565	286.064	TEREN
836	807554.847	1052560.072	282.157	PATA	897	807504.933	1052542.525	286.563	PATA
837	807551.149	1052562.324	282.904	PATA	898	807498.754	1052541.315	286.391	PATA
838	807549.415	1052562.266	283.291	PATA	899	807499.635	1052543.755	285.902	TEREN
839	807545.957	1052562.417	283.320	PATA	547	807611.841	1052664.141	269.707	DNO
840	807546.210	1052563.265	283.218	VPUST	900	807588.922	1052671.790	269.241	DNO
841	807547.369	1052563.828	283.483	OBRB	901	807548.876	1052684.648	270.209	DNO
842	807547.373	1052563.974	283.332	BETON	902	807548.526	1052682.744	269.974	DNO
843	807547.373	1052564.650	283.310	BETON	903	807548.462	1052672.371	269.706	DNO
844	807547.346	1052564.777	283.444	BETON	904	807548.382	1052671.337	269.676	DNO
845	807547.306	1052565.014	283.451	ASF	905	807572.032	1052682.324	270.110	DNO
846	807552.825	1052568.883	283.075	OSA	906	807571.930	1052677.286	269.507	DNO
847	807546.659	1052571.231	283.499	OSA	907	807571.678	1052675.044	269.385	DNO
848	807541.560	1052566.165	283.827	TEREN	908	807575.397	1052620.446	269.893	BETON
849	807537.660	1052563.657	284.065	ASF	909	807576.588	1052620.101	269.886	SCHODY





910	807576.952 ROURA200BETON	1052620.080	269.829
911	807577.610 ROURA200BETON	1052622.322	269.828
912	807578.351 ROURA200BETON	1052625.362	269.854
913	807578.437	1052625.610	269.591 DNO
914	807578.365	1052629.409	269.753 DNO
915	807579.617	1052632.962	269.734 DNO
916	807581.236	1052639.738	269.824 DNO
917	807583.566	1052645.545	269.456 DNO
918	807597.204	1052634.022	269.941 DNO
919	807601.029	1052641.330	269.549 DNO
920	807560.891	1052639.354	269.349 DNO
921	807537.306	1052636.654	269.714 DNO
922	807537.799	1052638.035	269.550 DNO





- Legenda**
- Bodové prvky polohopisu a výškopisu**
- Strom
 - Sloup betonový
 - Sloup dřevěný
 - Sloup kovový
 - Lampa
 - Vpust
 - Sačha
 - Sačha
 - Šoupě voda
 - Telecom
 - Místní info tabule
 - Dopravní značka
- Liniové prvky polohopisu a výškopisu**
- Svazková linie
 - Vrstevnice
 - Asfaltová komunikace
 - Práská cesta
 - Břeh, hrana svahu
 - Vodní tok
 - Plot dřevěný
 - Plot drátěný
 - Plot zděný
 - Budova
 - Roura
 - Betonový objekt
 - Kamenný objekt



VISIONPLAN-3D s.r.o.

VISIONPLAN-3D s.r.o.
Sokolovská 784/41, 323 00 Plzeň
IČO: 09565884, DIČ: CZ09565884

tel.: +420 737 770 270
e-mail: faferlik@visionplan.cz
www.visionplan.cz

Objednatel:
PONTEX, spol. s r.o.
Bezová 1658/1
147 00, Praha Braník

IČO: 40763439
DIČ: CZ40763439

Zakázka:
2201-0008-PV_Liblín - Most doměření
D.1.VYHOTOVENÍ 2D
Polohopisné a výškopisné zaměření okolí mostu v obci Liblín

K.ú. : Liblín [682993], Kozojedy u Kralovic [671932]

Zaměřil: Ondřej Šmolík, Ing. Patrik Fojt	Č. zakázky: 2201-0008-PV	Měřítko: 1:500	Paré:
Vypracoval: Ondřej Šmolík, Ing. Patrik Fojt	Souř. systém: S-JTSK	Formát A4: 8x	
Kontroloval: Ing. Jaroslav Faferlík	Výšk. systém: Bpv	Datum: 2/2022	