

-7-

POSOUZENÍ

$$\sigma_{AT} = \underline{\underline{900 \text{ (kPa)}}}$$

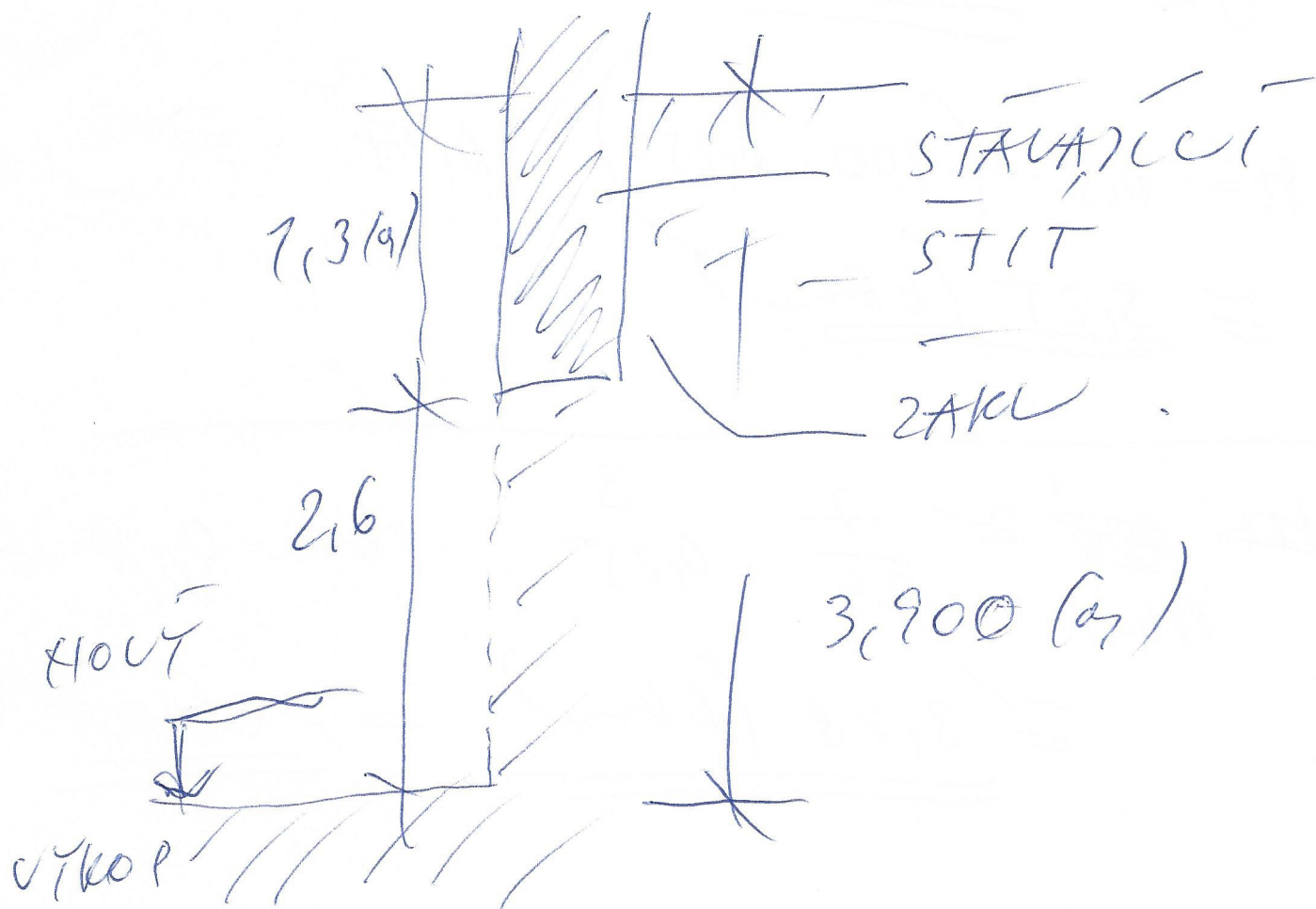
$$R \approx 0,15 \cdot (900 \cdot 0,25) \cdot 0,17^2 \approx \\ \approx \underline{\underline{3,25 \text{ (kN)}}}$$

$$\cancel{R_{bq}} \approx \frac{7}{29} \cdot 0,25^3 \cdot 900 \cdot 0,8 \approx \\ \approx \underline{\underline{3,28 \text{ (kN)}}} \Rightarrow \underline{\underline{VÝHODI}}$$

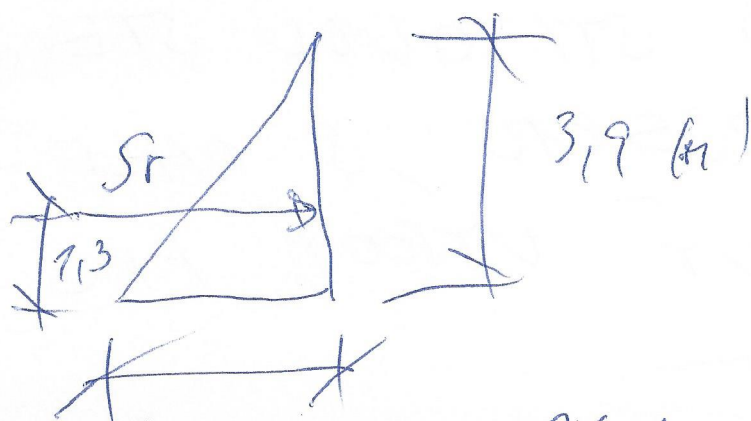
3) ZABEZPEČENÍ ZAKLADO-
VÝCH PASŮ (POD STÍTOVOU STĚNU)
STAVAJÍCÍHO OBJEKTU, S OHLE-
DEM NA NOVÝ VÝKOP PRO
NOVÝ OBJEKT

- 8 -

PRÍCHY PŘE - SCHÉMA :



ZEMNÍ TLAK



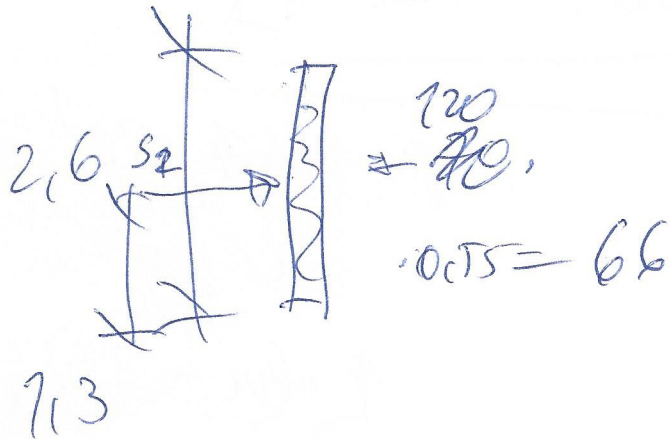
$$S_r \approx 49 \cdot 3.9.$$

$$\cdot 0.5 = \underline{\underline{85.8}}$$

(6x12)

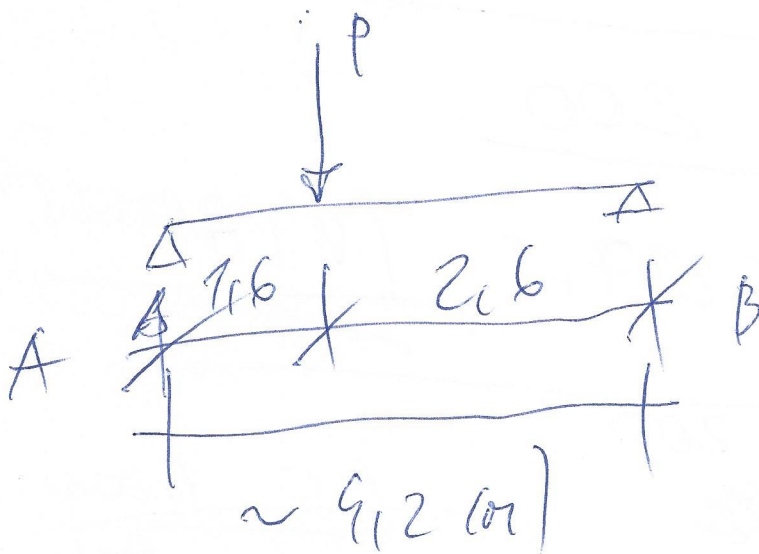
$$3.9 \cdot 20.5 \cdot 0.55 \approx \underline{\underline{44 \text{ t/m}^2}}$$

$$U_{KT} = \frac{6 \cdot \overset{0,15}{\cancel{AST}} \cdot 20}{0,15} \quad \Rightarrow$$



$$= \frac{120}{\cancel{70}} \text{ (per)}$$

$$S_2 = 66 \cdot 2,6 = \underline{\underline{172 \text{ (cm)}}}$$



$$P = \overset{86}{\cancel{172}} + 85,8 =$$

$$\approx \underline{\underline{258 \text{ (cm)}}}$$

$$\times 1,2 \approx \underline{\underline{310}}$$

$$A \cdot 9,2 - \overset{206}{\cancel{310}} \cdot 2,6 = 0$$

$$A \approx \underline{\underline{127 \text{ (cm)}}}$$

$$M = 190 \cdot 1.6 - 0.5 \cdot 1.6^2 \cdot 73 =$$

$$= 190 \cdot 1.6 - 30.9 = 93$$

NOVY PREPOČET

$$q = (44 + 82) \cdot \frac{2}{3} =$$

$$= 89$$

$$A_{29.2} = 2.6 \cdot ($$

$$q = (44 + 33) \cdot \frac{2}{3} =$$

$$M = 127 \cdot 1.6 - 0.5 \cdot 1.6^2 \cdot 61.8 =$$

$$= 203 - 79 \approx \underline{\underline{124 \text{ (kNm)}}}$$

HAVERH HEB 200

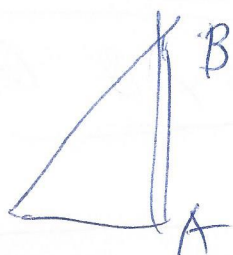
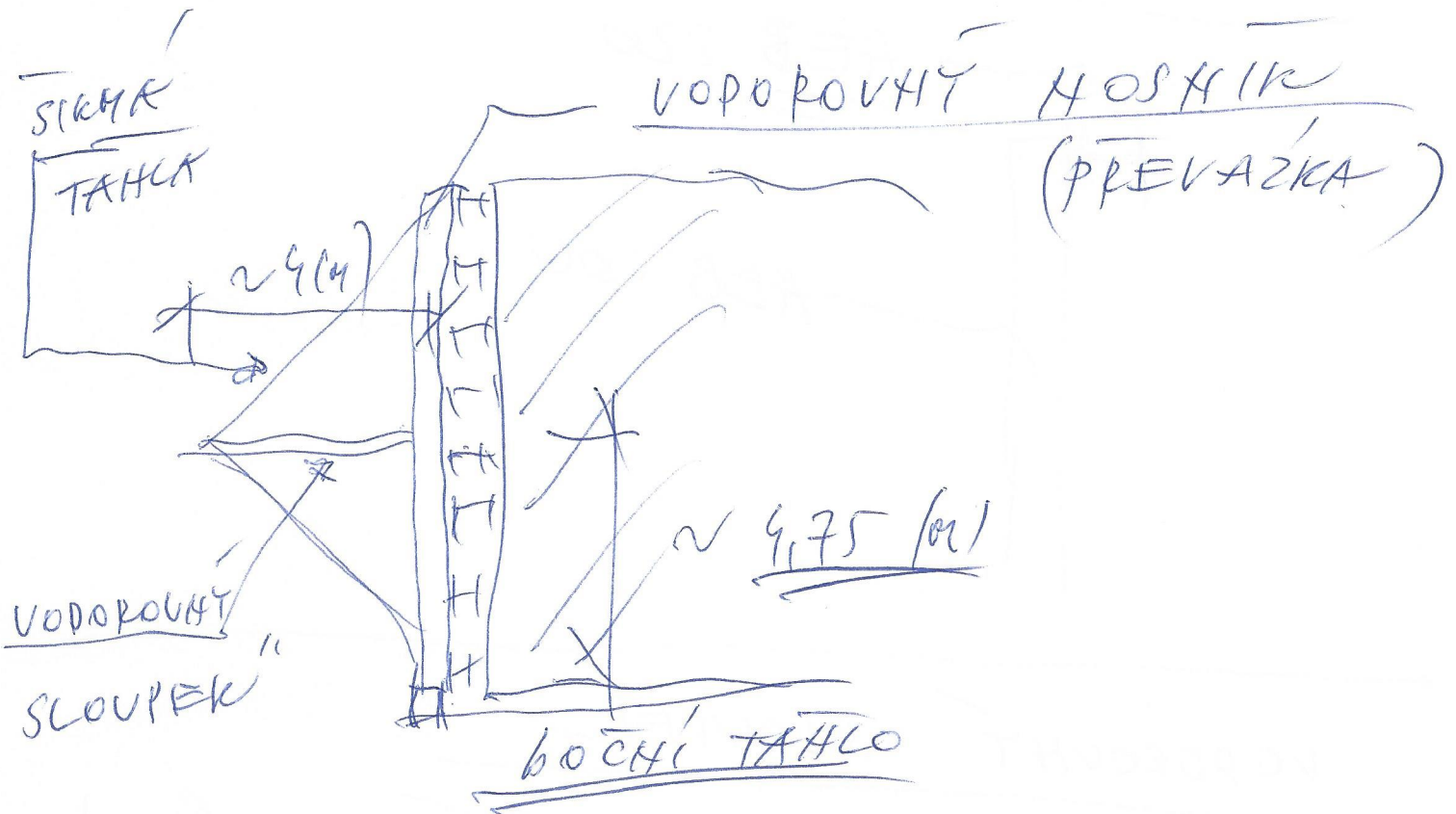
$$v = \frac{124 \cdot 10^3}{570} \approx 217.5 \text{ (VTAVUT)}$$

SVISLE HEB ²⁰⁰

$$\frac{P \cdot O \cdot 1,200}{(21)}$$

ZABEZPEČENÍ HEB (V HLAVĚ KOSTIKU)

PODORYS - SCHÉMA



$$127 + B = 851,8 + 857$$

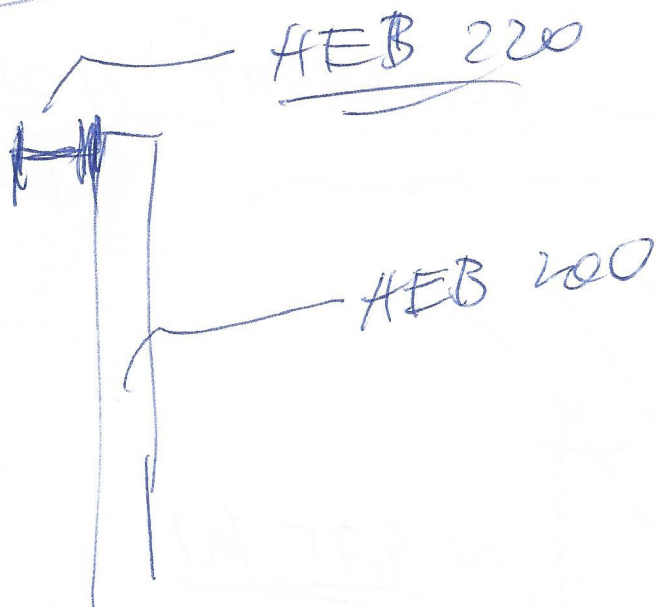
$$B = 857 - 127$$

$$730$$

-12

$$N_{max} = 0,125 \cdot 44 \cdot 9,75^2 =$$
$$= \underline{\underline{729 \text{ (kN)}}}$$

NAVRH : HEB 220



VODPOVÝT SLOUPEK :

$$N_{max} = 9,75 \cdot 44 \approx \underline{\underline{209 \text{ (kN)}}}$$

NAVRH : JACKL : 190 x 190 x 8 (mm)

SIKOVÁ TAHÁLA

-13-

$$N_{max} = 209 \cdot 7,7 \cdot 0,5 =$$

$$\approx \underline{\underline{777 \text{ (кН)}}}$$

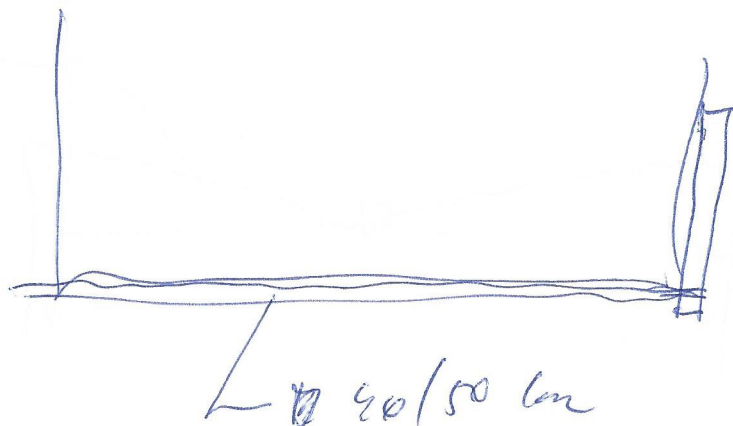
НАВРКА : ОБДЕЛКА ~~ОБЕРКОВА~~ ТТС

50 x 40 (см)

ПОСЛЕ ТАЛКО :

$$N_{max} = \cancel{477} \cdot \underline{\underline{209 \text{ (кН)}}}$$

НАВРКА
50
40 см



- 19 -

POZNÁSECI
PLECH

+ 4 KOTVY

R 20

PO ZPÍČKA

0,05

POZNÁSECI
PLECH

200

HEB 140

TAHAK

$$F_{max} = 209 \cdot 0,05 = \underline{\underline{10,45 \text{ (kN)}}}$$

V POZICI

ÚSSÍ

HEB

200

POHLED

~ 105
(24)

SÍKRA
TAHAK